

Senior Match Handbook

Season – 2022/23

To be read in conjunction with the [Senior Rules](#) and the [RDCA Constitution](#) at:

[Senior Documents](#)



Premier Division –	Trollope Shield, Wilkins Cup, Newey Plate, Pascoe Shield, Meehan Shield & Spencer Shield
District Division –	A, B, C, D, E, F, Split Innings Only Grades – G & H
Modified Division –	M1, M2, M3, M4, M5, M6

RDCA (Match day contacts)	0413 569 144	Pat Meehan
	0400 700 606	Michael Finn
(Modified Grades)	0407 874 894	Matt Thomas
(Yarra Valley)	0418 341 154	Greg Mitchell

Scores! Enter short scores into [MyCricket](#) by 9:00pm every match day.



R.D.C.A. Office: Jubilee Park, Gardini Avenue Ringwood [RDCA](#)

ALL MAIL SHOULD BE ADDRESSED TO: RDCA - Senior Secretary. Email: [Senior Secretary](#)



Presentation Night

Season 2022/23

Friday 21st April 2023

Dorset Gardens Function Centre
335 Dorset Rd Croydon

Starting at 7:00 pm. Cost \$65 per person

Complimentary tickets for any Trophy winner will be mailed to the Club Secretary with the winner's name written on the ticket. Complimentary tickets are non-transferable.

If Trophy winners are unable to attend, please advise, in writing (email), the Senior Secretary to avoid a fine being implemented. [Senior Secretary](#)

Dress: Neat Casual, no denim, 'T' Shirts or Flip Flops (Thongs).

Enquiries regarding Presentation Night Bookings please contact:

Jo Fairy marketing@rdca.com **0411 313 334**

Table of Contents – Match Guidelines

RDCA Information	4	Fielding Restrictions for Limited Over Games	28
Office Bearers	4	40/40 and 20/20.....	28
Board of Management.....	4	Limited Overs Time Loss	29
Other Contacts	4	Premier grades 40 overs matches Rules 18.2.2 and 18.2.3	29
Umpires Committee.....	4	Modified grades Rule 18.3.1 and 18.3.2.....	30
Other Committees online:.....	4	District grades including split innings Rules 18.3.1 and 18.3.2	31
Club Information	5	Modified Grades Rules	32
Club Contacts.....	5	Modified Rules table Rule 21.5	32
Team Grading and Match Venues.....	6	Split innings Rules table Rule 22.5.....	32
Summary of Rule Changes for 2022/23	7	T20 Rules 44 onwards.....	33
General Information.....	8	Rule 19 Hours, Overs and Bowling Restrictions	34
RDCA Policies Fitness of Ground Rule 26	9	Start time: 12:30 pm AEST, 1:00pm AEDT	34
RDCA Heat and Fire Rating Policy.....	10	Over Rate Requirements (Premier Division only)	35
Extreme Heat Conditions.....	11	Suspect Bowling Action Process	35
Definition.....	11	Dangerous and Unfair Bowling.....	36
Provisions	11	Full Toss Refer to Rule 15.6.	36
Guidelines and Advice.....	11	Short Pitched Deliveries.....	36
Remember HEAT	13	Umpire Duties and Responsibilities.....	37
Lightning Safety.....	14	After Match Duties	39
First Aid.....	14	The LBW Law (Law 36)	40
Concussion & Head Trauma	15	Five Penalty Runs (Trollope Shield and Wilkins Cup only) .	41
Purpose:	15	Umpire Signals	42
Scope.....	15	Cricket Pitch & Stump Dimensions	43
Protective Equipment Requirements	15	CODE OF CONDUCT Rule 13.....	44
Head and Neck Trauma Management.....	15	Reporting an Incident	46
Concussion & Head Trauma Assessment	17	Sample Incident Report Form.....	47
Recognise & Remove.....	17	Incident Report Synopsis.....	48
Visible clues of suspected concussion.....	17	Municipal Grounds.....	49
Signs and symptoms of suspected concussion.....	17	Grounds Codes and Locations.....	49
Memory function.....	17	Shire of Yarra Ranges	49
CONCUSSION RED FLAGS	18	City of Maroondah	50
Remember: DRS ABCD	18	Shire of Murrindindi.....	50
Important Rules and Guidelines	19	City of Knox	51
Assessment of Players, Teams and Playing Conditions	19	City of Manningham.....	51
JLT Sport Game Day and Training Checklist	19	RDCA Umpires' Association	52
Spirit of Cricket	20	History of the RDCA Umpires Association	52
Respect	20	Umpire Accreditation	53
Wet Weather Protocol	21	Umpire Accreditation Renewal.....	53
Ground Preparation & Maintenance Responsibilities	22	Community Officiating	54
The Role of the Home Captain / Team	22	Umpires' Beliefs, Responsibilities and Ethical Standards ...	54
The Role of Officially Appointed Umpire(s). Rule 38	22	Philosophy.....	55
Match Start Times	23	Rights	55
Registration Rule 9 and Classification Rule 10 of players ..	23	Theme	56
Clearances and Permits – Rule 11	23	RDCAUA Mission	56
Player's Grade Rule 10.2.i.....	24	Heat Guidelines for Cricket Umpires	57
Grading Drop Table.....	24	Before the Match	57
Substitutes Rule 10.5	24	During the Match	57
Player absent	25	Remember HEAT:	58
Afternoon Tea 15 minute rule	25	Ringwood & District Cricket Umpires' Code of Ethics	59
Afternoon Teas – Non -Provision	25	An umpire shall:.....	59
Cricket Attire.....	25	Expectations.....	60
NO Ball	25	Code of Conduct for Umpires.....	60
Wides	25	Umpires' Team Rules	61
10 Metre Circle.....	25	Match Manual Index	62
Minimum Overs for Premier Grades	25		
Considerations for Making Captain's Report on Umpires ...	26		
As a Technician.....	26		
As a Decision Maker	26		
Standard Playing Hours and Overs	28		
Bowling Restrictions	28		

RDCA Information

Office Bearers

Board of Management

President	Michael Finn	0400 700 606
Administration Manager	Timothy Court	0407 838 275
Senior Committee Chair	Pat Meehan	0413 569 144
Finance Manager	Graeme Seymour	0439 114 843
Junior Representative	Sean Flynn	0411 309 386
Veterans Representative	David Sherlock	0412 350 986
Marketing/Sponsorship Manager	Jo Fairy	0411 313 334

Other Contacts

Registration Secretary	Adam Kuklych	0475 451 101
Disciplinary Committee Chairperson	Wayne Hartley	0411 403 149
VMCU Delegate	Pat Meehan	0413 569 144
MyCricket Administrator	Adam Kuklych	0475 451 101
Yarra Valley Contacts	Dave Peel	0409 486 790
	Paul Broussard	0438 342 358
Health & Welfare Officer	Shane Kelton	0433 990 366

Umpires Committee

Chairperson	Doug Coldham	0488 689 911
Secretary	Jordan Russell	0413 357 444
Assistant Secretary & Social	Adam Kuklych	0475 451 101
Chairman of Selectors & MyCricket	Andy Laws	0418 545 175
Recruitment	Shawn Everitt	0419 884 107
Property/Membership	Barry Johnson	0417 102 057
Umpires' Mentor		
Umpires' Adviser	Dale Ireland	0415 185 562
Umpires Match Observer		

Other Committees online:

[Contact RDCA](#)

- [Board of Management](#)
- [Seniors](#)
- [Juniors](#)
- [Veterans](#)
- [Umpires](#)
- [Women](#)
- [Juniors](#)

Club Information

Club Contacts

Code & Website	Club	Secretary	Telephone	Home Ground	Telephone
APK	Ainslie Park	Alan Moss	0400 353 495	MR01	0407 874 894
BYP	Bayswater Park	Melanie Causer	0401 944 349	K01	0401 944 349
BOR	Boronia	Leigh Blennerhassett	0433 769 535	K03	0433 769 535
CSP	Chirnside Park	Brad Malbon	0425 664 747	YR08	0425 664 747
CST	Coldstream	Paul Harris	0408 883 235	YR30	0408 883 235
CNT	Croydon North	Graeme Milton	0418 388 149	MR04	9726 7771
CRR	Croydon Ranges	Kerryn Low	0407 866 942	MR08	0407 866 942
EAR	East Ringwood	Jordan Kearney	0406 515 104	MR17	0406 515 104
ESF	Eastfield	Dorothy Healy	0448 876 771	MR12	0448 876 771
HSV	Healesville	Jo Drummond	0438 003 129	YR35	0407 816 152
HEW	Heathwood	Steve Darmody	0413 596 158	MR21	0413 596 158
HDC	Hoddles Creek	Andrew Monahan	0439 311 178	YR37	0499 995 853
KIL	Kilsyth	Scott Nicholson	0400 640 911	YR01	9728 8773
LCP	Launching Place United	Leah Parker	0411 417 253	YR38	0411 417 253
LYD	Lilydale	Ecclees McDonald	0434 253 449	YR03	0419 115 542
MAR	Marysville & District	Travis Gleeson (Acting)	0409 253 449	MD01	0427 737 399
MTR	Montrose	Russell Dunning	0419 567 798	YR12	0419 567 798
MOO	Mooroolbark	Tina Danisch	0428 758 036	YR16	0433 990 366
MTE	Mt Evelyn	Chris Anderson	0401 945 830	YR25	0407 170 209
NRI	North Ringwood	Luke Ervine	0413 974 161	MR23	9879 1855
NOW	Norwood	John Kent	0431 113 472	MR36	0431 113 472
PWT	Powelltown	Kane Dunne	0447 374 388	YR48	0455 086 665
SBY	Scoresby	Matthew Chawulak	0438 008 219	K22	0438 400 172
SEV	Seville	David Peel	0409 486 780	YR29	0483 025 530
SCR	South Croydon	Owen Bennett	0413 150 601	MR11	0413 150 601
SWT	South Warrandyte	Frans Brouwer	0408 222 365	MH01	0408 222 365
STA	St Andrews	Antony Pedersen	0424 705 842	MR32	0424 705 842
TMP	Templeton	Paul Taylor	0488 006 955	K14	0419 554 091
WND	Wandin	Joshua Hamilton	0432 115 276	YR27	0432 115 276
WAN	Wantirna	David Andrew	0430 276 970	K09	0430 276 970
WSO	Wantirna South	Paul Jones	0418 500 315	K11	0418 500 315
WDT	Warrandyte	Robert Hay	0412 261 287	MH2	0412 368 078
WWD	Warranwood	Audrey Rooks	0407 017 994	MR26	0438 110 422
WOP	Wonga Park	Scott Parker	0409 387 370	MH5	0408 029 936
WYK	Woori Yallock	Dean Worlley	0421 475 715	YR40	0438 342 358
YRG	Yarra Glen	Mathew Grenfell	0409 622 053	YR41	0409 622 053
YJN	Yarra Junction	Tyson Gaskett	0421 787 630	YR42	5967 2110

Team Grading and Match Venues

Up to date ground information for a particular match may be obtained via the [MyCricket](https://mycricket.com.au) website.

Once at [MyCricket](https://mycricket.com.au) select **FIXTURES/Season Fixtures** then select **RDCA Competitions**, 2022/2023 as the season, select the **Grade** and click **Go**. (It's possible to click on the code below).

Here is a direct link.

<http://mycricket.cricket.com.au/common/pages/public/rv/draw.aspx?gradeid=273&id=DRAW&save=0&entityid=32>



Summary of Rule Changes for 2022/23

The RDCA Constitution and official RDCA Senior Playing Rules are separate documents and available on the [RDCA](#) website.

- Naming a player is now referred to as an Official reprimand. A report is still required.
 - Audible obscenity (heard beyond boundary) **Official reprimand**
 - Dissension / Disputing decision **Official reprimand**
 - Sledging or send off **Official reprimand**
 - Just as with Naming before, 2 official reprimands is followed by a 2 match suspension
- **Only an RDCA appointed umpire can impose a 5 run penalty as may be incurred under the Laws of Cricket.**
- In a 40 over match:
 - If more than 30 minutes are lost during the first innings then reduce the interval to 10 mins
 - If more than 30 minutes are lost before the match then reduce 1 over for every further 8 minutes
 - Reduce overs by 1 for every 4 minutes lost in the first innings (unchanged)
-



General Information

- Ignorance of the rules is no defence against any form of penalty outlined in the rules.
- Team Captains need to understand and embrace Rule 16: **Duties of Team Captains.**
- Match Reports (both teams) – Rule 33
 - Short Scores are to be entered into [MyCricket](#) by 9pm on the day of play, no need to phone or SMS to anyone. Minimum is the short scores but do **not** finalise or complete the match if entering on day one of a two day game.
 - Full match report to be completed on [MyCricket](#) by 6pm the day after match completed.
 - **Captains'** Appraisal of Professional Umpire on [MyCricket](#) within 72 hours.
 - To state clearly why a point was deducted from a score of 10
- Umpires' fees will be paid by the RDCA to each umpires' designated bank account and charged against Clubs' accounts.
- \$160.00 per umpire for each full match day
- T20 games \$80.00 per umpire
- Where play is abandoned by the Senior Committee, there will be no payment to the umpire(s).
- When an umpire is required to attend the game and play does not proceed beyond the tea break, 50% of the fee is payable.
- The full fee is to be paid once play continues, for whatever period of time, beyond the scheduled tea break.
- Affiliation Fees:
 - Senior teams \$210.00
 - Junior teams \$140.00
 - Veterans \$110.00
- LATE entry of teams will not be permitted.



RDCA Policies

Fitness of Ground Rule 26

[Member Protection](#) including Harassment and Discrimination Policy

Underage Players Rule 29.6

Helmets Rule 29.7

Other Policies

[Working with Children](#)

[Social Media Policy](#)

[Privacy Policy](#)



RDCA **Heat** and Fire Rating Policy

Forecast at 8.00 am

Temperature	(Modified Rules) 36°C or more	(Conventional Rules) 39°C or more	Dangerous Conditions
Fire Rating	<i>Not Applicable</i>	<i>Not Applicable</i>	<i>Code Red</i>
ACTION	<u>All Modified Grades</u> cancelled	<u>All Fixtures</u> cancelled	<u>All Fixtures</u> cancelled

During Play

Match Officials expected to monitor temperature at start and each break in play
i.e. Drinks Breaks and Tea Break

CONVENTIONAL MATCH RULES	39°C or more	Less than 39°C	40°C or more
ACTION	Leave the field; monitor temperature every 15 minutes If not under 39°C within 60 minutes abandon days play	Play may commence or resume with temperature monitored at each break	Play abandoned for the day
MODIFIED	36°C or more	Less than 36°C	40°C or more
ACTION	Leave the field; monitor temperature every 15 minutes If not under 36°C within 60 minutes abandon day's play	Play may commence or resume with temperature monitored at each break	Play abandoned for the day

Reference point for local temperature information – Bureau of Meteorology smartphone app selecting *Current location*.

All interruptions to play must be recorded in scorebook including time and temperature readings

The RDCA Senior Committee retains discretion to abandon part or all competition matches on the day prior if circumstances dictate.

Extreme Heat Conditions

Cricket is a summer sport and as such it is inevitable that at times, matches will be scheduled for play during extreme heat conditions. As such, all captains, officials, team managers, coaches and umpires must acknowledge that they have a fundamental 'Duty of Care' to all players & officials.

Definition

Forecast temperature is 36° C or more for Modified Grades and 39° C or more all other grades.

Provisions

1. Adequate ice, easy to access shade, cold fresh water and sunscreen will be made available to both teams and officials at all times during the day.
2. If possible, drink eskies with water bottles and sports drinks are to be placed near the boundary.
3. Any player may take a drink break at the end of any over.
4. Official drink breaks are to be taken every 30 minutes.
5. Players under 18 years of age are restricted to bowling spells of 8 overs as per Rule 15.
6. Clubs should avoid having players under 14 years of age on the field if possible.
7. Normal loss of time rules applies in case of any lost time due to extreme heat.

Guidelines and Advice

Symptoms of Heat Injury or Heat Stroke

High intensity exercise in a hot environment can lead to: **Dehydration, Heat Exhaustion and Heat stroke.** Heat stroke is a potentially fatal condition and must be treated immediately by a medical professional.

The symptoms of heat injury or heat stroke are:

- Fatigue
- Nausea
- Headache
- Confusion
- Light-headedness

These symptoms indicate players should **stop playing, drink more fluids** and **cool down**. Seek medical treatment if these symptoms don't improve rapidly.

Also remember to keep an eye on other players or officials who may not realise they are suffering from dehydration or heat stress.

Timing of Training

Where possible, avoid scheduling training during the hottest part of the day (usually between noon and 4pm during daylight saving time). Early morning or night practice minimises the risk of encountering unacceptable playing conditions.

Hydration

The ACB Junior Cricket Policy refers to the following guidelines regarding hydration practices for matches held during hot weather. These guidelines are also relevant to senior cricket competitions. Drinks breaks should occur every 30-40 minutes in all matches (every 30 mins in conditions of extreme temperature)

- Water is the most appropriate drink for re-hydration. However diluted cordial or sports drinks may be supplied. Flavoured drinks may be particularly palatable to children who have consistently poor drinking habits during exercise
- Drinks should be available for individual players between drinks breaks. Umpires should be advised when additional drinks are sought and players should make every effort to ensure
- No time is wasted
- Players are to have their own drink bottles. This ensures that each player has access to an adequate level of replacement fluids and reduces the risk of contamination and viruses
- Where cups and a large container are used, cups must not be dipped into the container. Used cups should be washed or disposed of after use
- Do not share cups if used
- Remember, Covid-19 and other viruses are still around

Additional considerations in regard to Hydration include:

- Consideration should be given to relaxing slow over rate penalties to allow for additional drinks breaks (which should be completed as soon as possible).
- Drink bottles also may be made available with club square leg umpires if deemed necessary or stored underground on the field if a suitable facility exists (eg. covered tap box).
- Encourage players and officials to drink plenty of fluids (preferably water) with no restrictions placed on players getting drinks, placing them on the field, etc.

Player Rest and Rotation.

- It is recommended that wherever possible when extreme temperatures are forecast, surplus players should be selected in addition to 12th man
- Consider rotating players on and off the field. Rest periods are particularly important for faster type bowlers
- Ensure players and officials seek shade when players not on the field
- Team managers/coaches especially should be vigilant and not pressure their players in any way re performances or endurance.
- Limit bowling spells
- Limit individual batting innings

Clothing

It is essential that everyone is made aware of the importance of:

- Wearing long sleeved shirts
- Wide brimmed hats
- The appropriate application and re-application of SPF 30+ sunscreen
- The use of wet towels
- Sunglasses

Other Considerations

The welfare of players and umpires is paramount

- On days of extreme heat coaches, players, umpires and officials should be aware of the possible risks and carefully monitor all players and umpires. If any show signs of distress from the heat (see symptoms of heat illness outlined above) swift and appropriate action should be taken
- Be aware that junior, female and older players are more susceptible to heat injury.
- Be aware of junior players also playing in senior matches on the same day.
- Ensure there are sufficient shaded areas at grounds for both players and spectators where possible

Remember HEAT

Hydrate **bearing in mind COVID-19 is still around**

Ensure good nourishment

Ask for extra drinks breaks

Talk to each other to recognise heat stress



Lightning Safety

Electrical storms and the presence of lightning is difficult to predict and can be localised in nature. The following guideline (which applies to all Senior, Junior, Veteran and representative matches) is to assist match leaders (umpires, captains and junior coaches/managers) to make a duty of care decision when faced with weather conditions causing lightning within the proximity of active cricket matches.

If lightning and thunder (flash to bang) are separated by a period of time of less than 30 seconds, then the lightning is close enough (within 10km) to be a threat. Match leaders are advised to immediately suspend play and all players and officials are to move to SAFE areas. Common sense should also prevail. If lightning is observed in your vicinity, leave the field. Do not hesitate to take the initiative and lead your players off even if the opposition and/or umpires do not agree.

1) SAFER AREAS DURING A LIGHTNING EVENT

- a) Enclosed vehicles with windows closed (car, van, bus or similar)
- b) Substantial enclosed buildings
- c) Low ground, sheltering in clumps of low bushes
- d) Trees of uniform height, e.g. forest or large group of trees

2) UNSAFE AREAS INCLUDE:

- a) High ground
- b) Open ground
- c) Water
- d) Isolated or tall trees
- e) Near outdoor metal structures such as fences, gates, poles, seating
- f) Insubstantial structures such as shade shelters and picnic sheds

A period of 30 minutes should elapse before play is resumed, that is, after seeing the last lightning flash, wait 30 minutes before leaving shelter. If during this time lightning is again observed, the 30 minutes starts again.

First Aid

Victims of lightning strikes are safe to handle- they do not “retain charge”. First aiders must ensure they do not become another casualty- move the victim to a safer location. Effects of lightning strike include cardiac and respiratory arrest caused by disruption of the brains’ control centres. CPR or EAR should be given as required. It is important that even people who show no symptoms immediately after the strike receive medical attention as some effects may not be immediately obvious.



Concussion & Head Trauma

Identification of concussion symptoms rests with match officials (unless a qualified medical practitioner is in attendance) who are to follow the assessment procedures herein and take appropriate action to ensure the safety and well-being of all participants.

The “assessor” shall be the qualified medical practitioner if present, otherwise the most medically qualified player, official umpire(s), Club official or team captain.

Purpose:

1.1 It critical to pursue best practice in prevention and management of concussion and head trauma arising in the course of participating in RDCA sanctioned competitions and training sessions.

Scope

2.1 This Policy applies to: (i) all male and female players and (ii) all umpires (collectively referred to as Participants):

(a) Participating in any RDCA sanctioned competitions and matches or training for such competitions or matches or training and

(b) who receive a blow to the head or neck (either bare or while wearing protective equipment), whether by ball or otherwise.

Protective Equipment Requirements

3.1 The RDCA recommends the use of helmets:

- by all players (regardless of age)
- by umpires.
- use of products/attachments properly fitted to helmets that provide additional protection for the vulnerable neck/occipital area of the batter (Neck Guards).

3.2 Helmets should be replaced immediately in accordance with the manufacturer’s recommendations following an impact.

Head and Neck Trauma Management

4.1 If a Participant receives a blow to the head or neck (either bare or while wearing protective equipment), whether by ball or otherwise, then the assessor will undertake the Concussion Protocol outlined at Appendix 1 to this Policy, if they deem the blow warrants it. Importantly, this can include:

(a) Completing an on-field assessment to determine whether a concussion is established or suspected. Concussion is established through the reporting of symptoms and/or observation of signs. Symptoms are generally subjective to the individual (e.g. dizziness, headache, nausea) and signs are generally objective (e.g. loss of consciousness, altered balance, amnesia, disorientation, uncontrolled fall).

(b) If a concussion is suspected or a further assessment is required, follow the Concussion Protocol by removing the Participant from the sporting environment and completing the assessment guidelines at Appendix I.

(c) If a concussion is diagnosed, following the return to play steps contained in the Concussion Protocol.

4.2 If the assessor directs a Participant to leave the field or training area (if a concussion is diagnosed or if further assessment is required), the Participant must leave the field without delay.

4.3 No person, including the Participant under assessment, should attempt to influence the assessor in making their assessment or the decision to remove the Participant from the field for further assessment.

4.4 The match situation is not relevant in the management of the Participant and whether they are required to leave the field of play if concussion is suspected or diagnosed. The primary and only concern in any assessment shall be the health, safety and welfare of the Participant suspected of having suffered a head trauma/concussion. As an example, it is not relevant to the operation of this Policy, or the assessment of the Participant by the medical staff member or contractor, that the Participant is in a last wicket partnership to save or win a match.

4.5 If there is a qualified doctor on duty at a match or training session, the doctor will make any assessments required under this Policy. At matches or training sessions where a qualified doctor is not present, official umpire(s) or team captain(s) or most senior club official will undertake any necessary assessments (however he/she must refer the Participant to a doctor if he/she suspects a concussion or hospital if he/she suspects a serious head/neck injury). RDCA supports a conservative approach to the diagnosis and treatment of concussion and head/neck injuries.

4.6 More serious co-existing diagnoses (e.g. fractured skull, neck injury) should be managed as an emergency priority with ambulance attendance sought and once these are excluded then diagnosis of concussion can be considered.

4.7 After a blow to the head/neck, if any of the following are present:

- (a) Loss of consciousness for any time;
- (b) Amnesia – inability to remember recent details;
- (c) Inability to keep balance;
- (d) Vomiting not explained by another cause, such as known gastroenteritis; and/or
- (e) Tonic posturing or fitting,

Then the diagnosis of concussion (or more serious head trauma) is established.

4.8 More subtle symptoms (e.g. headache, dizziness, feeling of vagueness) are less conclusive, and in these scenarios, the Concussion Protocol in Appendix 1 should be completed.

4.9 The assessor will make the final diagnosis of whether a concussion may have occurred and refer the participant to a qualified doctor.

4.10 The participant will not be permitted to resume play on the day of the incident without first obtaining written clearance from a qualified doctor.



Concussion & Head Trauma Assessment

Recognise & Remove

Concussion should be suspected **if one or more** of the following visible clues, signs, symptoms or errors in memory questions are present.

Visible clues of suspected concussion

Any one or more of the following visual clues can indicate a possible concussion

- Loss of consciousness or responsiveness
- Lying motionless on the ground / Slow to get up
- Unsteady on feet/ Balance problems or falling over/ Incoordination
- Grabbing/ Clutching of head
- Dazed, blank or vacant look
- Confused/ Not aware of state of play or events

Signs and symptoms of suspected concussion

Presence of anyone or more of the following signs and symptoms may suggest a concussion.

Loss of consciousness	Headaches	Seizure or convulsion
Dizziness	Balance problems	Confusion
Nausea or vomiting	Drowsiness	Feeling slowed down
“Pressure in Head”	More emotional	Irritability
Blurred vision	Sensitivity to light	Sadness
Amnesia	Sensitivity to noise	Fatigue or low energy
Don’t feel right	Neck Pain	Feeling like ”in a fog”
Nervous or anxious	Difficulty remembering	Difficulty concentrating

Any player/ umpire with a suspected concussion should be IMMEDIATELY REMOVED FROM PLAY, and should not be returned to activity until they are assessed medically. Players/ Umpires with a suspected concussion should not be left alone and should not drive any vehicle.



Memory function

Failure to answer any of the following questions correctly may suggest a concussion:

- “What is your full name”
- “What is your date of Birth
- ”What venue are we at today”
- “What is the name of your club”
- “Are you batting or bowling”

In all cases of suspected concussion, the player or umpire is referred to a medical professional for diagnosis and guidance as well as return to play decisions, even if the symptoms resolve.

CONCUSSION RED FLAGS

If **ANY** of the following are reported then the player should be safely and immediately removed from the field of play. If no qualified medical professional is available, consider transporting by ambulance for urgent medical assessment.

Complains of Neck Pain

Deteriorating conscious state

Increasing confusion or irritability

Severe or increasing headache

Repeated vomiting

Unusual behaviour change

Seizure or convulsion

Double vision

Weakness, tingling or burning in the arms or legs

Remember: DRS ABCD

The basic principles of first aid:

- Danger
- Response
- Send (for Ambulance)
- Airway
- Breathing
- CPR
- Defibrillation



Important Rules and Guidelines

Assessment of Players, Teams and Playing Conditions

JLT Sport Game Day and Training Checklist

The website is [here](#), though written for football it equally applies to cricket.

This checklist is a basic pre-game/training inspection tool that helps to identify safety concerns and record your club's actions.

In each RDCA scorebook, there is a checklist form that should be used by all teams for every game or there is a smartphone app which can be found under JLT Cricket Match Day for both Android and iOS.

On the JLT form see page 3, point 2. Field of Play,

All Boundary markers (lines, ropes, hats, etc.) at least 3 yards/2.74 metres away from any off-field hazards including but not limited to fencing, concrete gutters, goal posts, trees or other solid structures which may cause injuries to cricketers.

Your club executive may need to discuss with council officers the need for them to remove any existing goal posts for the safety of cricketers.

Scores! Enter short scores into [MyCricket](#) by 9:00pm every match day.

Spirit of Cricket

Cricket is a game that owes much of its unique appeal to the fact that it should be played not only within its Laws but also within the Spirit of the Game.

Any action which is seen to abuse this spirit causes injury to the game itself. The major responsibility for ensuring the spirit of fair play rests with the **captains**, but extends to all players and officials. Captains need to step up and work with their players to embrace to this all-important philosophy.

Respect

The RDCA expects that all players and officials apply themselves in all matters pertaining to cricket with respect for the ideals under which cricket should be played.

Not only do the objectives of our Association project “the playing and fostering of cricket, free from any objectionable features, and the better acquaintance and fellowship of the players” but The Laws of Cricket devotes a specific section on the spirit of the game and the responsibility of captains, with whom major onus rests, and players to ensure that the game is not injured by unwarranted actions.

All players, officials and spectators involved in RDCA matches are expected to:

Respect the Rules and Laws under which the matches operate. This includes possessing a good knowledge of the Laws and Rules of the game and applying them without fear or favour.

Respect your own captain and team. It is a privilege for you to represent your club on the field of play; no matter in what level of cricket you are involved. Reciprocate by conducting yourself with decorum while always endeavouring to do your best.

Respect your opposition players. While acknowledging that good natured banter is acceptable as part of the modern game, comments should be restricted to the conduct of the match and must never degenerate to what may be construed as personal abuse. There is no place for any act of violence on or off the playing field during the course of play.

Respect the Role of the Umpires. Umpires, whether officially appointed or volunteers, are expected to control the game, as required by the Laws and rules, with absolute impartiality. Captains, players and umpires alike must uphold this basic essential of the game.

Respect the Spirit of the Game and its Traditional Values. It is against the Spirit of the Game:

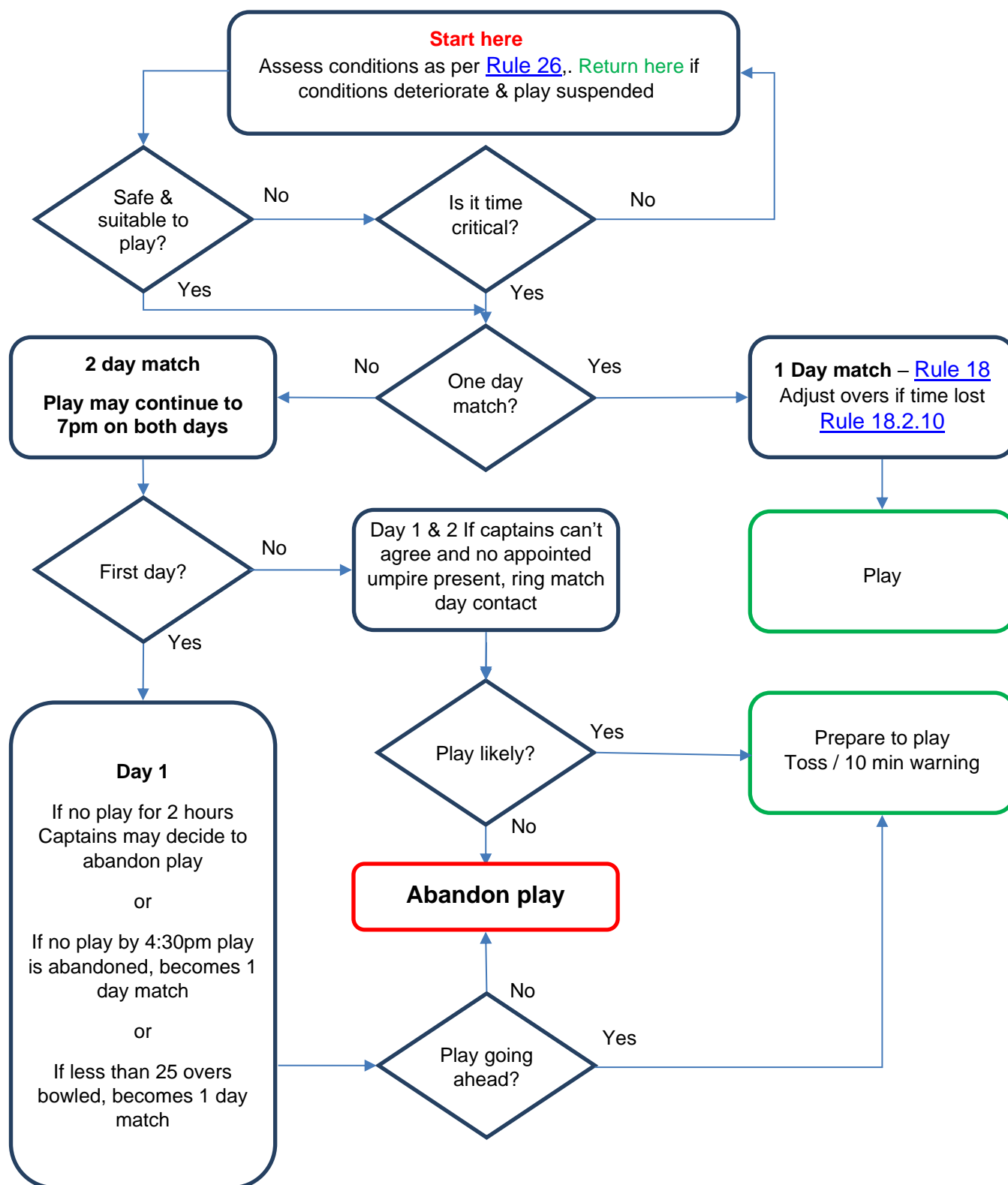
- To dispute an umpire’s decision by word, action or gesture
- To direct abusive language towards an opponent or umpire
- To indulge in cheating or any sharp practice eg:
 - To appeal knowing that the batter is not out
 - To advance towards an umpire in an aggressive manner when appealing
 - To seek to distract an opponent either verbally or by harassment with persistent clapping or unnecessary noise under the guise of enthusiasm and motivation of one’s own side.

Captains and umpires together set the tone for the conduct of a cricket match. Every player is expected to make an important contribution to this.

It is expected by the RDCA Senior Committee that all umpires, players, officials and spectators will adhere to the Spirit of Cricket and, should they witness behaviour unbecoming to the game, bring such actions to the notice of the RDCA Senior Secretary, through appropriate channels, for action.

Not to do so will devalue the spirit of this great game. Any transgression will get a vigorous, predictable response from the Disciplinary Committee.

Wet Weather Protocol



Duty of Care is applicable at all times

Captains must sign off "Match Day Checklist" indicating conditions are playable and confirm:

- Bowlers are able to bowl from normal run-up
- Fielders have secure footing
- Batters are able to safely run between wickets and turn without undue hinderance
- No other hazards are apparent

Ground Preparation & Maintenance Responsibilities

The Role of the Home Captain / Team

Per Rule 16.4 & Rule 27.8, it is the responsibility of the Home Club, through its appointed team captain, to have the ground properly prepared for play.

This involves:

- Removing any obstructions or obstacles
- Boundary markers (lines, ropes, hats, etc.) are in position
 - Min 3.1 metres away from any hazards like fencing, concrete gutters, trees or other solid structures which may cause injuries
- Fielding circles are in place
- Stump holes are level with the pitch surface
- Bowlers' run-ups are satisfactory
- Stumps are in place at least 5 minutes before the scheduled start of play

These preparations must be in place prior to the scheduled commencement of play and the umpire is obliged not to let the match proceed until satisfactorily completed.

Similarly, should the match be interrupted during play due to excessive rain, and a decision is made to attempt to continue, it is the responsibility of the Home team to expeditiously undertake any necessary maintenance requirements to return the field to playable status.

Failure of the Home Club / Team to initiate / complete preparation maintenance requirements may result in the matter being brought to the attention of the RDCA Senior Committee for their consideration of disciplinary action for the offending Club, Captain and / or team.

The Role of Officially Appointed Umpire(s). Rule 38

On arrival at the ground, the appointed umpire(s) assume(s) full control / responsibility for the conduct of that match. Their main responsibility is to ensure completion of the fixture and that all preparations have been made, wherever possible, to achieve commencement of play.

Of course, the safety of the players is paramount.

It is solely for the umpire(s) to decide whether conditions of ground, weather or light or exceptional circumstances mean that it would be dangerous or unreasonable for play to take place. Conditions shall not be regarded as either dangerous or unreasonable merely because they are not ideal. The fact that the grass and the ball are wet does not warrant the ground conditions being regarded as unreasonable or dangerous.

Conditions shall be regarded as dangerous if there is actual and foreseeable risk to the safety of any player or umpire and be regarded as unreasonable if, although posing no risk to safety, it would not be sensible for play to proceed.

If the umpires consider the ground is so wet or slippery as to deprive the bowler of a reasonable foothold, the fielders of the power of free movement, or the batters of the ability to play their strokes or to run between the wickets, then these conditions shall be regarded as so bad that it would be dangerous and unreasonable for play to take place.

If at any time the umpire(s) agree that the conditions of ground, weather or light, or any other circumstances are dangerous or unreasonable, they shall immediately suspend play, or not allow play to start or to recommence. If play is in progress and the umpires do not agree about such conditions, they shall immediately suspend play.

When there is a suspension of play it is the responsibility of the umpires to monitor conditions. They shall make inspections as often as appropriate, unaccompanied by any players or officials. Immediately the umpire(s) agrees that the conditions are no longer dangerous or unreasonable they shall call upon the

players to resume play.

Let's get together to ensure that we all work from the same page and play as much cricket as the elements allow.

Match Start Times

Normally the first day of the season is the first Saturday in October. In Non - Daylight Saving Time matches start at 12.30pm, thereafter at 1.00pm unless otherwise advised by the RDCA Senior Secretary. Rule 19.1

Registration Rule 9 and Classification Rule 10 of players

- If a player is unregistered or ineligible the team will forfeit the match to the opposition.
- Clubs must complete a registration form for all new players prior to inputting player details:
- Get a copy of the [Player Registration](#) form here
- This form is to be retained by the club and made available to the RDCA for verification if required.
- Each club is responsible for inputting new player registrations into the **MyCricket** system, including players requiring a clearance, to their club's block list of players.

Clearances and Permits – Rule 11

- Where a player requires a clearance, such application is to be lodged through **MyCricket**.
- The club being asked to approve the clearance shall respond within seven days, again through the **MyCricket** system.
- The player is ineligible without this approval.
- Upon clearance being granted, the cleared player will automatically be registered with the new club.

Any concerns with **MyCricket** please contact our Registration Secretary and MyCricket Administrator [Adam Kuklych](#).



Jason Butcher



0423 935 100

**Creating Solutions for
all your Finance Needs!**

Jason Butcher is a Credit Representative (No. 503274) of Money Quest Australia Pty Ltd, Australian Credit Licence 487823



Player's Grade Rule 10.2.i

If a club has two or more teams in this Association, then any player of that club may play in any team of that club, within 6 grades or 1 team, whichever is the greater number of grades, than played in their previous match, without the approval of the Senior Committee. *NB: within 6 grades **excludes** the grade last played.*

Grading Drop Table

Club	Trollope	Wilkins	Newey	Pascoe	Meehan	Spencer	A	B	C	D	E	F	G	H	M1	M2	M3	M4	M5	M6-YVH
TRO																				
WIL																				
NEW																				
PAS																				
MEE																				
SPE																				
A																				
B																				
C																				
D																				
E																				
F																				
G																				
H																				
M1																				
M2																				
M3																				
M4																				
M5																				
M6-YVH																				
	Grade that the player was in the previous match																			
	Grades the player may drop down in the next match (Or next team below in the club)																			
No substitutes are permitted in Modified Rules Grades. Otherwise see Rule 10.5																				

Substitutes Rule 10.5

Persons called upon to act as "substitutes" MUST be registered players of this Association. A player may act as a substitute in a grade not more than two (2) consecutive club teams lower than the team in which they last played for that club during the current season. A player acting as a substitute need not have played the required qualification matches in order to act as a substitute in finals.

Radio **EASTERN**
FM 98.1

FUNDRAISING
\$PECIALIST

Player absent

Rule 15.9 - Any Player absent at commencement of a day's play shall not incur any time penalty on taking the field for the first time on that day. A batter who is not out on Day one and is absent at start of play on Day two, may resume his innings following the fall of any subsequent wicket until the innings is complete.

Afternoon Tea 15 minute rule

Rule 24.1 - In a 2-day match, If there is any break in play within 15 minutes of the tea break then the tea break shall be taken immediately. If the team is 9 wickets down at the tea-break then play continues for 15 minutes.

Afternoon Teas – Non -Provision

Unless otherwise advised by the RDCA Senior Secretary, players and officials are to be responsible for providing their own afternoon tea. Under no circumstances are clubs to provide a shared afternoon tea.

Cricket Attire

Rule 12.1 describes proper cricket attire for all players.

Rule 12.4 describes the coloured clothing for Limited-Over matches in Premier grades.

NO Ball

Rule 15.2 ii In all grades where a professional umpire is not officiating, any ball that would pass higher than the height of a batter's shoulder whilst standing in an upright position shall be called and signalled as a "No Ball" in both Limited-Over and Two-day matches.

Rule 15.6 Defines actions to be taken when a professional umpire is officiating.

Rule 15.8 A ball pitching off the designated playing surface, shall be called and signalled "No Ball" by either umpire.

Wides

Rule 15.7 In grades without professional umpires Rule 18.1.3 applies

Rule 18.1.3 explains 'Wides' in Limited-Over matches which require painted lines as described in Rule 27.9.

Any additional extras scored shall be debited against the offending bowler.

10 Metre Circle

Rule 29.6 ii) Restrictions apply on fielding within ten (10) metres of the strikers' centre stump.

Rule 27.8 Home teams will be responsible for marking full continuous circles of ten (10) metres radius on the ground centred on the middle stumps.

Minimum Overs for Premier Grades

Rule 20.1 In each innings of a match the overs bowled shall be no less than 16 overs per hour. A full day's play is scheduled to be completed by no later than 6:20pm.

Rule 20.2 Penalties

Rule 20.3 Notification of Penalties

Official Match Scoring Requirements Rule 32

Considerations for Making Captain's Report on Umpires

As a Technician

Positioning

At the Bowler's end

- Did the umpire move up to the stumps to give guard?
- Did the umpire look comfortable and was he in the best position possible to adjudicate on "No Balls" etc. and to give decisions?
- Did the umpire move quickly to the best position square of the wicket to adjudicate on run outs, short runs etc.

At Square Leg

- Did the umpire take up a position about a pitch length from the pitch?
- When the ball was played behind him, did the umpire turn to side on to follow the path of the ball whilst at the same time able to adjudicate **on short runs**?

Communication

- Were you able to approach the umpire with a genuine query regarding the conduct of the match and receive a cordial reply?
- Did the umpire make clear the playing conditions for the match and expectations regarding player behaviour, the taking of drinks etc. at the toss
- Did the umpire initiate unnecessary conversation with the players during the course of the game?
- Did the umpire maintain communication with his colleague?

Concentration

- As the day progressed, were little things missed – a "wide" call, a No Ball call, a short run, an extra ball in an over? Did the umpire forget to cross over for the left hand – right hand batting combination? All signs of concentration wavering.
- Were the umpire's decisions consistent throughout the day?

Match Management

- Did the umpire keep you informed of the over rate?
- Was the umpire proactive in managing potential problems?
- Did the umpire treat the match as "the players game" and he was only there to count balls and make decisions – or did he become part of the game?

Knowledge of Laws and Playing Conditions

The umpire may have made errors in judgement, but did he make errors in Law?

As a Decision Maker

Out – LBW

- Were LBW decisions consistent throughout the match?
- If doubt existed was the benefit given to the batter?
- In interpreting the LBW Law, where could the umpire improve his decision making?

Out - Caught:

- If doubt existed was the benefit given to the batter?
- Did the umpire consult with his colleague when necessary?
- In interpreting the Caught Law, where could the umpire improve his decision making?

Out - Run Out/Stumped

- If doubt existed was the benefit given to the batter?
- Was the umpire well positioned to give these decisions?
- In interpreting these Laws, where could the umpire improve his decision making?

Calling & Signaling

- Calling was clear.

- Signals were correct and unambiguous

Implementation of Law 42 - Fair & Unfair Play

If called upon to implement aspects of Law 42, did the umpire

- Interpret the Law correctly
- Issue the appropriate cautions in the appropriate way?
- Enlist the assistance of the Captain to take action and move the game forward?

There will be matches where the umpire is not called upon to make any judgements.

Eg – there are no reasonable appeals for stumpings or run outs. In these cases, the umpire receives a score of 10 with a note possibly on the report that there was no need to adjudicate in these areas.

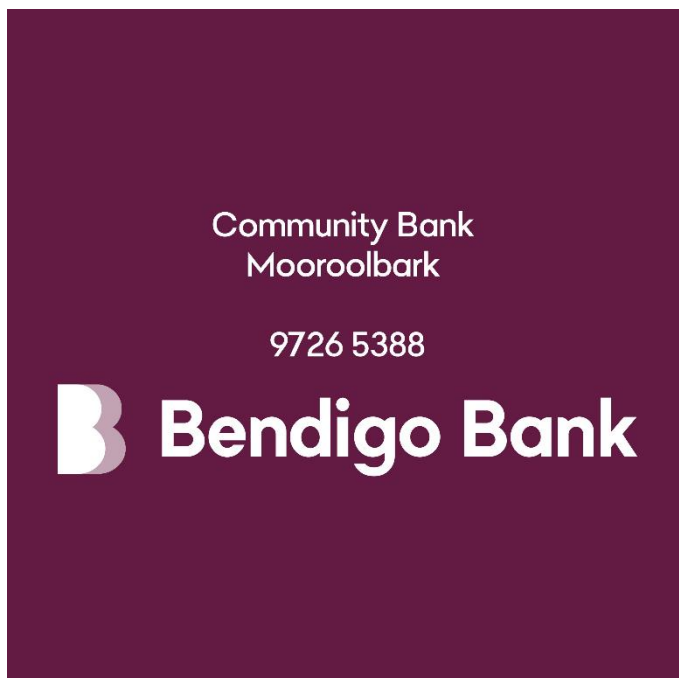
It is expected that an umpire who has had an error free and competent day would score 10 in all categories.

Remember – you are assessing the umpire’s current performance. Assessment should not be influenced by history or hearsay.

Points Awarded

In instances where points are awarded below 10, a specific comment is to be made of an error or deficiency; eg. “LBW – 6. A couple of decisions given where batters clearly hit the ball”.

Mind you, there shouldn’t have been an appeal made in this case.



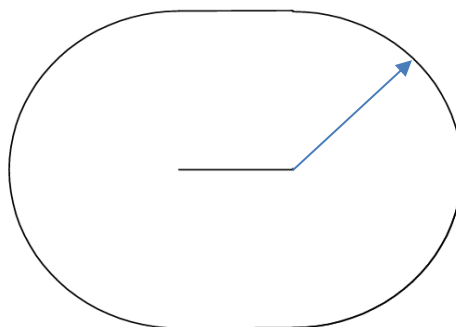
Standard Playing Hours and Overs

Bowling Restrictions

Refer to Rule 19 for the hours, overs and bowling restrictions for particular grades

Fielding Restrictions for Limited Over Games

40/40 and 20/20



Continuous
30m Radius
from middle
stumps

Type of Game – Number of Overs		Maximum of fielders outside the capsule
40/40	20/20	
1 – 10	1 – 5	2
11 – 20	6 – 10	3
21 – 30	11 – 15	4
31 – 40	16 – 20	5
The restrictions reduce proportionally in a shortened match see Tables 18-1 & 18-2	The overs reduce proportionally in a shortened match see Rule 51.	

Limited Overs Time Loss

When first innings time is lost overs are reduced. This can involve time lost before the start and during the first innings. The following tables show the bowling restrictions when time is lost. It is different for the 3 types of innings.

Premier grades 40 overs matches Rules 18.2.2 and 18.2.3

One Day 40 Over Compound Loss of Time Calculation Table																														
Fielders Outside Capsule						Time lost before start	Time lost during the first innings																							
2	3	4	5	Bowlers X Overs			0	4	8	12	16	20	24	28	32	36	40	44	48	52	56	60	64	68	72	76	80			
Up to over	10	20	30	40	5 X 8		30	40	39	38	37	36	35	34	33	32	31	30	29	28	27	26	25	24	23	22	21	20		
	9	19	29	39	4 X 8 & 1 X 7		38	39	38	37	36	35	34	33	32	31	30	29	28	27	26	25	24	23	22	21	20			
	9	18	28	38	3 X 8 & 2 X 7		46	38	37	36	35	34	33	32	31	30	29	28	27	26	25	24	23	22	21	20				
	9	18	27	37	2 X 8 & 3 X 7		54	37	36	35	34	33	32	31	30	29	28	27	26	25	24	23	22	21	20					
	9	18	27	36	1 X 8 & 4 X 7		62	36	35	34	33	32	31	30	29	28	27	26	25	24	23	22	21	20						
	8	17	26	35	5 X 7		70	35	34	33	32	31	30	29	28	27	26	25	24	23	22	21	20							
	8	16	25	34	4 X 7 & 1 X 6		78	34	33	32	31	30	29	28	27	26	25	24	23	22	21	20								
	8	16	24	33	3 X 7 & 2 X 6		86	33	32	31	30	29	28	27	26	25	24	23	22	21	20									
	8	16	24	32	2 X 7 & 3 X 6		94	32	31	30	29	28	27	26	25	24	23	22	21	20										
	7	15	23	31	1 X 7 & 4 X 6		102	31	30	29	28	27	26	25	24	23	22	21	20											
	7	14	22	30	5 X 6		110	30	29	28	27	26	25	24	23	22	21	20												
	7	14	21	29	4 X 6 & 1 X 5		118	29	28	27	26	25	24	23	22	21	20													
	7	14	21	28	3 X 6 & 2 X 5		126	28	27	26	25	24	23	22	21	20														
	6	13	20	27	2 X 6 & 3 X 5		134	27	26	25	24	23	22	21	20															
	6	12	19	26	1 X 6 & 4 X 5		142	26	25	24	23	22	21	20																
	6	12	18	25	5 X 5		150	25	24	23	22	21	20																	
	6	12	18	24	4 X 5 & 1 X 4		158	24	23	22	21	20																		
	5	11	17	23	3 X 5 & 2 X 4		166	23	22	21	20																			
	5	10	16	22	2 X 5 & 3 X 4		174	22	21	20																				
	5	10	15	21	1 X 5 & 4 X 4		182	21	20																					
5	10	15	20	5 X 4		190	20																							

Overs remaining

To find the number of overs remaining for the first innings

- 1 Select the time lost in minutes before the innings in the pink column
- 2 If no time is lost then use the 30 minute row
- 3 Move across the blue time lost in minutes during the first innings.

To find the fielding and bowling limits

- 1 Move down the green shaded 5 **Fielders Outside Capsule** column to the number of overs remaining for the innings
- 2 Example: If **31 overs are to be bowled** then up to Over 7=2,15=3,23=4,31=5 fielders outside capsule and 1 X 7 & 4 X 6 bowlers x overs

Modified grades Rule 18.3.1 and 18.3.2

Modified 36 Over Compound Loss of Time Calculation Table																				
Minimum bowlers with min 2 overs each	Time lost before the start	Time lost during the innings																		
		0	4	8	12	16	20	24	28	32	36	40	44	48	52	56	60	64	68	72
7	60	36	35	34	33	32	31	30	29	28	27	26	25	24	23	22	21	20	19	18
7	68	35	34	33	32	31	30	29	28	27	26	25	24	23	22	21	20	19	18	
7	76	34	33	32	31	30	29	28	27	26	25	24	23	22	21	20	19	18		
7	84	33	32	31	30	29	28	27	26	25	24	23	22	21	20	19	18			
7	92	32	31	30	29	28	27	26	25	24	23	22	21	20	19	18				
7	100	31	30	29	28	27	26	25	24	23	22	21	20	19	18					
7	108	30	29	28	27	26	25	24	23	22	21	20	19	18						
6	116	29	28	27	26	25	24	23	22	21	20	19	18							
6	124	28	27	26	25	24	23	22	21	20	19	18								
6	132	27	26	25	24	23	22	21	20	19	18									
6	140	26	25	24	23	22	21	20	19	18										
6	148	25	24	23	22	21	20	19	18											
6	156	24	23	22	21	20	19	18												
6	164	23	22	21	20	19	18													
6	172	22	21	20	19	18														
6	180	21	20	19	18															
6	188	20	19	18																
5	196	19	18																	
5	204	18																		

Overs remaining

To find the number of overs for the first innings

- 1 Select the time lost in the pink column titled **Time lost before the start** of the innings in minutes
- 2 If no time is lost before the start then use the 60 minute row
- 3 Move across the blue **Time lost during the innings** in minutes to find the applicable overs.

To find the bowling restrictions

- 1 Move down the **bold, shaded**, zero **Time lost during the innings** column to the number of overs for the innings
- 2 If, for example, **31 overs** are to be bowled then on the left are min **7 Bowlers x 2 Overs** must be used

District grades including split innings Rules 18.3.1 and 18.3.2

District 35 Over Compound Loss of Time Calculation Table																				
Maximum overs per bowler		Time lost before the start	Time lost during the first innings																	
Bowlers x Overs			0	4	8	12	16	20	24	28	32	36	40	44	48	52	56	60	64	68
5 X 7		60	35	34	33	32	31	30	29	28	27	26	25	24	23	22	21	20	19	18
4 X 7	& 1 X 6	68	34	33	32	31	30	29	28	27	26	25	24	23	22	21	20	19	18	
3 X 7	& 2 X 6	76	33	32	31	30	29	28	27	26	25	24	23	22	21	20	19	18		
2 X 7	& 3 X 6	84	32	31	30	29	28	27	26	25	24	23	22	21	20	19	18			
1 X 7	& 4 X 6	92	31	30	29	28	27	26	25	24	23	22	21	20	19	18				
5 X 6		100	30	29	28	27	26	25	24	23	22	21	20	19	18					
4 X 6	& 1 X 5	108	29	28	27	26	25	24	23	22	21	20	19	18						
3 X 6	& 2 X 5	116	28	27	26	25	24	23	22	21	20	19	18							
2 X 6	& 3 X 5	124	27	26	25	24	23	22	21	20	19	18								
1 X 6	& 4 X 5	132	26	25	24	23	22	21	20	19	18									
5 X 5		140	25	24	23	22	21	20	19	18										
4 X 5	& 1 X 4	148	24	23	22	21	20	19	18											
3 X 5	& 2 X 4	156	23	22	21	20	19	18												
2 X 5	& 3 X 4	164	22	21	20	19	18													
1 X 5	& 4 X 4	172	21	20	19	18														
5 X 4		180	20	19	18															
4 X 4	& 1 X 3	188	19	18																
3 x 4	& 2 x 3	196	18																	

Overs remaining

To find the number of overs for the first innings

- 1 Select the time lost in the pink column titled **Time lost before the start** of the innings in minutes
- 2 If no time is lost before the start then use the 60 minute row
- 3 Move across the blue **Time lost during the first innings** in minutes to find the applicable overs.

To find the bowling restrictions (Example)

- 1 Move down the **bold, shaded, zero Time lost during the innings** column to the number of overs for the innings
- 2 If **31 overs** then on the left are 1 X 7 & 4 X 6 **Bowlers x Overs** (More bowlers, each with less overs, can be used)

Modified Grades Rules

Rule 21 explains the Modified Rules

Rule 21.1 applies to both One-day and Two-day matches.

Rule 21.2 applies to One-day matches.

Rule 21.3 applies to Two-day matches.

Modified Rules table Rule 21.5

Description	Limited-Over match	Two-day match
Overs per match	72 (36 each team)	144 (72 each team)
Overs per split	36	36
Min. Bowlers per split	7	7
Min. overs per bowler/split	2	2
Max. overs per bowler/split	7 *	7 *
Ball over the shoulder	No Ball	No Ball
Batter retires upon reaching	50	100
Retired Batter returns	Yes	Yes
Overs per end	6	6

* When a Not Out Retired batter returns to the crease, bowling restrictions for individual bowlers are no longer applicable; however, the team must still bowl the minimum number of bowlers.

Split innings Rules table Rule 22.5

Description	Limited-Over match	Two-day match
Overs per match	70 (35 each team)	140 (70 each team)
Overs per split	35	35
Min. Bowlers per split	5	5
Min. overs per bowler/split	2	2
Max. overs per bowler/split	7	7
Ball over the shoulder	No Ball	No Ball
Overs per end	5	5

T20 Rules 44 onwards

Rule 51 Interrupted or reduced overs match

In an interrupted or reduced over match then fielding restrictions will apply as follows:

Length (overs)	2 out	3 out	4 out	5 out
20	1-5	6-10	11-15	16-20
19	1-4	5-9	10-14	15-19
18	1-3	4-8	9-13	14-18
17	1-2	3-7	8-12	13-17
16	1	2-6	7-11	12-16
15		1-5	6-10	11-15
14		1-4	5-9	10-14
13		1-3	4-8	9-13
12		1-2	3-7	8-12
11		1	2-6	7-11
10			1-5	6-10

Less than 10 overs each = no match.



Rule 19 Hours, Overs and Bowling Restrictions

Start time: 12:30 pm AEST, 1:00pm AEDT

Grades Legend: (A) = Premier Division, (B) = District Division inc Split Innings, (C) = Modified Division

		Two-Day Matches (including two-day finals)	Limited-Over Matches
1	Hours of play	1:00pm – 6:20pm (may be extended to 7:00pm with time lost, check rule 17.2)	1:00pm – 6:20pm (may be extended to 7:00pm with time lost)
2	Scheduled overs of play per day Rules 17.2 and 17.7	(A) 80 (B) 70 (C) 72	(A) 80 (B) 70 (C) 72
3	Designated maximum scheduled overs per match	(A) 160 (B) 140 (C) 144	(A) 80 (B) 70 (C) 72
4	Afternoon Tea Break (See also Rule 24)	3:20 pm – 3:40 pm	After completion of first innings (20 mins)
5	Compulsory close Team batting first	(A) 80 overs (for match) (B) 70 overs (for match) (C) 144 overs (for match)	(A) 40 overs (for innings) (B) 35 overs (for innings) (C) 36 overs (for innings)
	Team batting second	(A) 160 overs (for match) (B) 140 overs (for match) (C) 144 overs (for match)	(A) 40 overs (for innings) (B) 35 overs (for innings) (C) 36 overs (for innings)
6	Minimum overs required to constitute a match	(A) 25 overs (for match) (B) 25 overs (for match) (C) 25 overs (for match)	(A) 20 overs per team (B) 18 overs per team (C) 18 overs per team
7	If team batting first or is dismissed	Balance of maximum scheduled overs	Not applicable
8	Completion of Match	At completion of scheduled overs rules 17.2 & .7	Team batting second declares, is dismissed, or compulsorily closed
9	Slow Over rate (N/A in finals)	Premier division only Rule 20	Premier division only Rule 20
10	FOLLOW ON may be enforced	If the first innings lead is 80 runs or greater	Not applicable
11	Bowling restrictions (i) General	Nil	(A) 8 overs per bowler (B) 7 overs per bowler (C) 7 overs per bowler
	(ii) Time lost - Before start	Nil	Reduce 1 over per bowler, in turn, for each 8 minutes lost. Premier D'n 18.1, others 18.2
	During 1 st innings	Nil	Reduce 1 over per bowler, in turn, for each 4 minutes lost. Premier D'n 18.1, others 18.2
	(iii) Underage Max overs per pace* bowler per afternoon	U/17 – 16 overs U/19 – 20 overs	U/17 and U/19 (A) 8 overs per bowler (B) 7 overs per bowler (C) 7 overs per bowler
	Max overs per pace* bowler per spell	U/17 – 8 overs U/19 – 10 overs	U/17 and U/19 (A) 8 overs per bowler (B) 7 overs per bowler (C) 7 overs per bowler
	Break between spells	U/17 and U/19 - twice the number of overs bowled in the previous spell	U/17 and U/19 - twice the number of overs bowled in the previous spell
	* Bowling type guideline	Bowlers of medium pace or faster are broadly defined as those for whom the wicketkeeper would normally stand back <u>or</u> as any bowler who is not considered to be a spinner.	

Table 19-1

19.1 Where summertime (daylight saving) hours are not in operation, all matches will commence 30 minutes earlier than indicated in Table 19-1 above.

Over Rate Requirements (Premier Division only)

Rule 20.1 In each innings of a match, the overs bowled will be no less than 16 overs per hour. A full day's uninterrupted play is scheduled to be completed by no later than 6.20 pm.

Suspect Bowling Action Process

1. Player identified by umpires, or by club report for matches without appointed umpires, as having a suspect action, should be reported to the RDCAUA Secretary and, in turn, RDCA Senior Secretary.
2. RDCA Senior Secretary to advise player's club to be advised of identification and confirms process to be taken *and seeks permission to observe and film the bowler's action (if necessary) at the next possible opportunity. Parent's written permission is required for players under 18 years of age.*

(Note: If permission is granted then proceed to step 3 and player may continue to bowl in matches. If permission is not given then the player is banned from bowling in any matches until completion of the whole assessment / remedial action process.).

3. RDCAUA Umpires Observer views bowler at next available match and advises RDCA Senior Secretary of outcome.
4. If action is considered suspect by the Umpires Observer, RDCA Senior Secretary advises club and player under review and sets a time frame for the following actions to be completed.
5. Club arranges for player's action to be videotaped and assessed by an accredited bowling coach approved by the RDCA Senior Committee, at the first opportunity (at cost to club). [Note: The RDCA sponsor, Saxon Sports, has offered to undertake this step for any club.]
6. Appointed bowling coach reviews and analyses videotape and provides a comprehensive report with recommendation for remedial action required to both the club and RDCA Senior Secretary.

The player is banned from bowling in matches until such time as remedial action recommended is completed and action reverts to within legality in terms of the Laws of Cricket.

7. Club initiates the remedial action and advises RDCA Senior Secretary upon completion and sign off by an accredited bowling coach.
8. RDCA Senior Secretary advises club and RDCAUA Secretary that the player is now available to bowl in the next match.
9. In the event that the redial action is not successful, as reported by the umpires, or participating clubs where no professional umpire is appointed, then the player will be not be allowed to continue bowling.

The RDCA Senior Secretary will inform the club in writing and recommend that the player be referred to Cricket Victoria's High Performance Department for further detailed analysis and review (at the club's cost).

10. A comprehensive signed off report, together with a copy of the video analysis and any recommended remedial actions, must be provided to the RDCA Senior Secretary before the player can resume bowling. A copy of the video will then be provided to the RDCAUA for the information of the umpires.

Dangerous and Unfair Bowling

Full Toss Refer to Rule 15.6.

Short Pitched Deliveries

A short-pitched ball is defined as a delivery that would have passed over the shoulder of a batter standing upright at the crease.

In all grades without a professional umpire ANY short-pitched ball shall be a **NO Ball**.

A maximum of one (1) fast, short-pitched balls shall be allowed per over in 1 Day matches.

A maximum of two (2) fast, short-pitched balls shall be allowed per over in 2 Day matches.

An extra short-pitched ball in any over shall be a **No Ball** and requires the umpire to adopt the procedures laid down in Laws 41.6.3 to 41.6.5 - "Bowling of dangerous and unfair short pitched deliveries - action by the umpire" after deciding that the bowling has become Dangerous or Unfair.

Law of Cricket 21.10 applies - any ball that bounces above head height of a batter standing upright at the crease shall be deemed as a "**No Ball**" and called / signalled as such. It shall also be counted as one (1) of the maximum short-pitched balls allowed per over.

In a **one day match, where a Professional umpire is officiating**, one (1) ball per over may pass over the batter's shoulder whilst standing in an upright position. Any other ball within the over which in the umpire's opinion would pass higher than the height of the batter's shoulder whilst standing in an upright position shall be called and signaled as a "**No Ball**" by the umpire at the bowler's end OR by a professional umpire at square leg.

In all other limited Over/One day Matches any fast, short-pitched ball, as defined above, shall be called "**No Ball**" and the umpire shall implement procedures in terms of Law 41-6.



Umpire Duties and Responsibilities

For Team and / or Professional Umpires

Before Match

1. Be properly prepared:
 - Maintain a thorough knowledge of the Laws of Cricket and RDCA Rules
 - Clothing as per RDCA requirements
 - Equipment – (basic requirements) - Tape measure or like, mallet, counter, water bottle, watch, notebook & pen, bowlers' markers.
2. Check appointment details
3. Ensure attendance at ground at least 45 minutes before scheduled start
4. Greet colleague and synchronise watches
5. Check boundaries, outfield pitch surrounds for any dangerous surfaces, holes etc. and that crease markings and fielding restrictions are clear; organize rectification with home Club as necessary.
6. Pre-match discussion with both team captains re match conditions, boundaries, joint responsibilities as to player behaviour and match conduct and confirm when drinks breaks are to be taken.
7. Supervise coin toss 30 minutes prior to time of commencement of match or as dictated by conditions.
8. Erect stumps at least 20 minutes before scheduled start of match.
9. Introduce yourself to scorers and establish where they will be located.
10. Sight team lists and that they have been exchanged before play begins.
11. Advise both teams, 5 minutes before start, that umpires are taking the field and walk out together with your colleague.

Bowler's End Umpire

1. Ask bowler his method of delivery, convey to striker, and provide "guard" to striker as requested.
2. Check readiness of striker, fielding captain, other umpire and scorers (prior to commencement or recommencement of play following drinks, tea or any other interruption).
3. At scheduled time, call "Play".
4. Call "Play" at the start of each innings, the start of each day's play, and at restart after any interval or interruption.
5. Count the number of balls and calls "over" after 6 legitimate balls.
6. Keep fielding captain abreast of over rate at least at each interval.
7. Call and signal to the scorers "No Balls" within his jurisdiction and all "Wides".
8. Signal to scorers all "Boundaries", "Byes" and "Leg Byes".
9. Answer appeals covering all modes of dismissal encompassing "Bowled", "Caught", "LBW", "Handled the Ball", "Hit the Ball Twice", "Obstructing the Field", "Timed Out" and "Run Out" at his end.
10. Call and signal "Dead Ball" when applicable.
11. Check for "Short Runs" while batters are running between wickets. Signals as required.

12. Give consent to fielder leaving or returning to the field and determines time before permitting returning fielder to bowl.
13. Ensure no more than 5 fielders on leg side at instant of delivery; otherwise calls "No Ball".
14. Make decisions based on hard evidence and maintains impartiality at all times.
15. Call for drinks to be ready 2 overs before agreed time.
16. Call "Time" at cessation of play before intervals, interruptions of play, at end of each day's play and at the conclusion of the match.
17. Respond to any captains' enquiries.

Striker's End Umpire

1. Support colleague by counting balls bowled (Signalling when 2 remaining in over) and, to assist with LBW decisions, indicates how far striker is standing out of his ground.
2. Call and signal short run(s) at his end.
3. Answer appeals for "Hit wicket", "Stumped" and "Run Out" at his end.
4. Observe bowler's action for fairness of delivery (Reports any concerns to RDCA Executive)
5. Check number of fielders behind square leg at instant of delivery. Calls "No Ball" if more than 2.
6. Check whether any runner does not leave the crease prior to the ball reaching the striker.
7. Observe position of batters with regard to crossing when action indicates possible catch, over throws or illegal fielding.
8. Ensure wicket keeper does not encroach in front of stumps before taking the ball.
9. Watch for all forms of illegal play.
10. Give utmost co-operation and assistance to colleague at all times.
11. At All Breaks of Play
12. Ensure the match ball is in the possession of an umpire until play recommences.
13. Take note of last striker and bowler.
14. Check that score books agree at the Tea Break and close of play
15. Record time of start and termination of innings to calculate innings time for inclusion on Umpires' Match Report.



After Match Duties

Day 1 of 2 day games

1. Record last bowler and end bowled from
2. Record last facing batter and end batting
3. Decide with other umpire who will retain the match ball(s).
4. Check that score books agree and balance.

At conclusion of match

1. Check that score books balance and agree result.
2. Make notes for Umpires' Match Report Form including "Fairest and Best" and "Spirit of Cricket" voting and any matters to be advised to Association Executive for action.
3. If necessary, complete Umpires' Incident Report Form(s) and have signed off by the player or Club official. Submit all reports to reach the Umpires' Secretary within 24 hours of completion of the match but preferably sooner.

Within 72 hours of completion of match

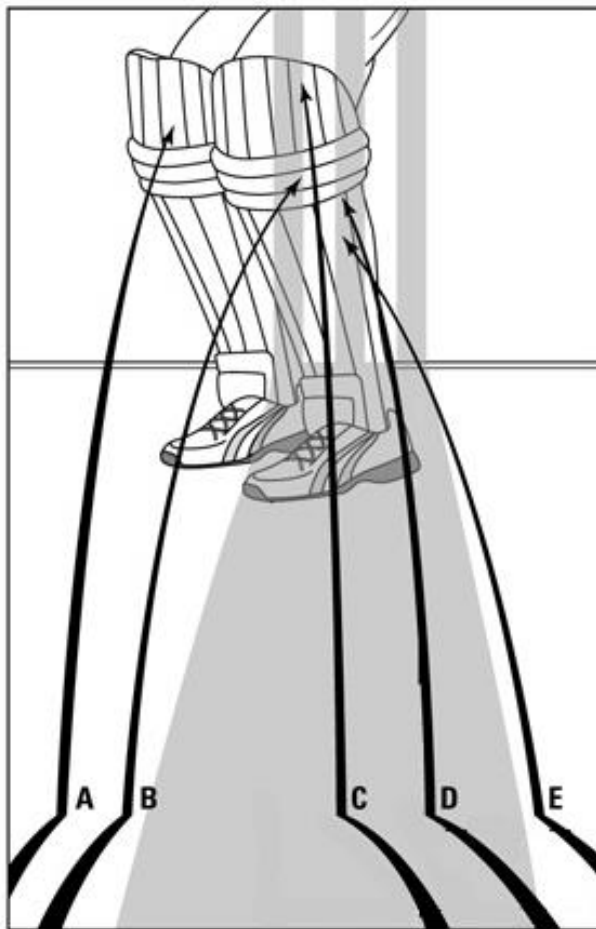
1. Enter Umpires' Match Report into **MyCricket**.
2. View personal Captains' Reports on Umpires to obtain feedback on match performance.

The logo for Dorset Gardens Hotel features the words "DORSET", "GARDENS", and "HOTEL" stacked vertically. "DORSET" and "HOTEL" are in a bold, orange, sans-serif font, while "GARDENS" is in a bold, white, sans-serif font. The text is set against a black rectangular background. Below the black rectangle is a solid orange rectangle that extends to the bottom of the page.

**DORSET
GARDENS
HOTEL**

The LBW Law (Law 36)

For a batter in a cricket match to be given out *leg before wicket* (LBW) a strict set of rules apply, to do with where the ball has struck the pitch and then hit the batter's pad. This figure takes you through the possibilities.



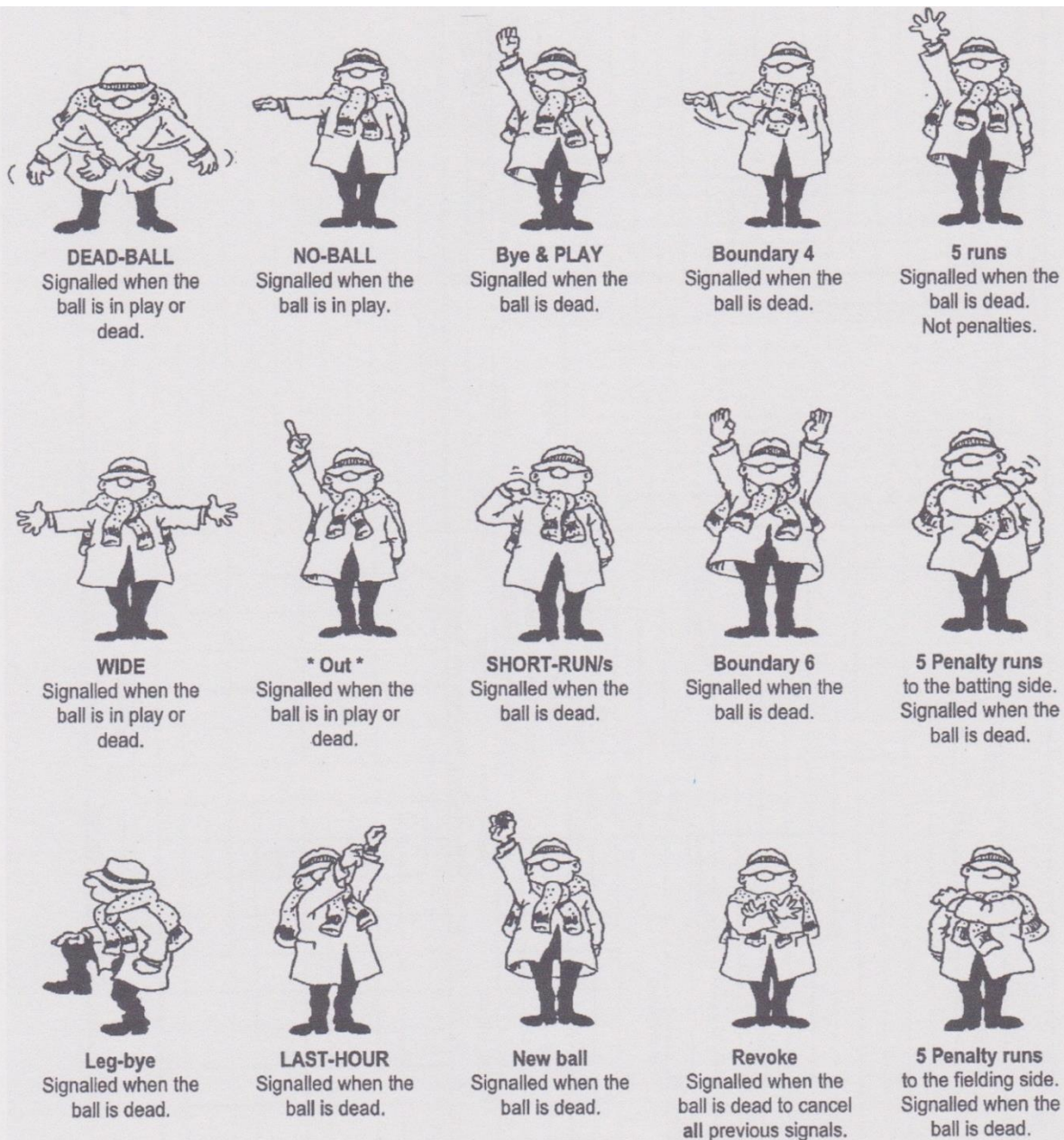
- A. Not out. Ball striking pad outside line of stumps. Ball would not have hit stumps.
- B. Out. If the batter did not play a shot, OR if the batter is hit in line with stumps, and ball will go on to hit wicket. Ball pitched outside line of off stump.
- C. Out. If the umpire feels the ball would have hit the stumps and not missed the top.
- D. Out. Ball pitched inside line of leg stump.
- E. Not out. Ball pitched outside line of leg stump.



Five Penalty Runs (Trollope Shield and Wilkins Cup only)

Offence	Law No	Final Warning	Action	Report
Player returning without permission	24.4		Ball is dead 5 run penalty Ball re-bowled	Player & Captain
Deliberate short run	18.5	When ball is dead, first and final warning. No runs. Send batters back	When ball is dead, No runs send back 5 penalty runs	Player(s) & Captain
Illegal fielding	28.2.3		Ball is dead 5 run penalty Ball to be re-bowled	Player and Captain
Ball hits fielder's helmet placed behind the wicketkeeper	28.3.2		Ball is dead 5 run penalty	
Ball tampering	41.3	First and final warning. Change the ball 5 run penalty	Any further instance in the innings: Change ball Bowler removed 5 run penalty	Player(s) & Captain
Deliberate distraction of the striker	41.4	Call and signal dead ball First and final warning No dismissal Ball to be re-bowled	Call and signal dead ball No dismissal 5 run penalty Ball to be re-bowled	Player(s) & Captain
Deliberate distraction or obstruction of the batter	41.5		Call and signal dead ball No dismissal 5 run penalty Ball to be re-bowled Batters decide who faces	Player(s) & Captain
Time wasting by fielders	41.9	Call dead ball or when the ball is dead, first and final warning	Call dead ball or when ball is dead Either 5 run penalty (if between overs) or captain to remove bowler (if during the over)	Team & Captain
Time wasting by batter	41.10	When ball is dead, first and final warning	Any further instance during the innings, when ball is dead, 5 run penalty	Player(s) or team & Captain
Fielders damaging the pitch	41.12	When ball is dead, first and final warning	Any further instance during the innings, when ball is dead, 5 run penalty	Player(s) & Captain
Batter damaging the pitch	41.14	When ball is dead, first and final warning Inform each incoming batter	Any further instance during the innings, when ball is dead, No runs, send back 5 run penalty	Player(s) & Captain
Batters stealing a run	41.17		Call and signal dead ball as soon as the batters cross: Send back 5 run penalty	Player(s) & Captain

Umpire Signals



Umpires must signal events in the order they occurred – Penalty run signal precede all others.

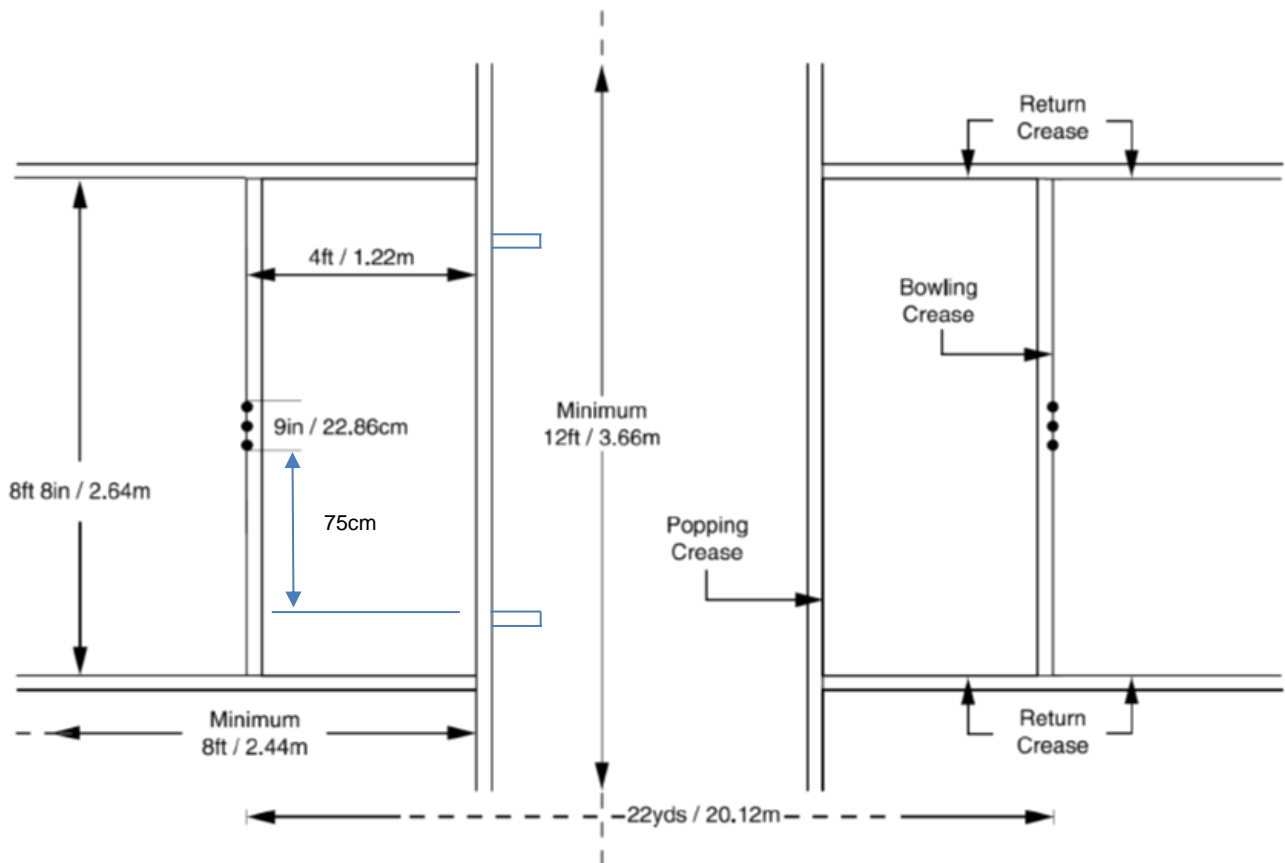
CAPITALISED signals are made first with a **CALL** for the players' benefit, then when the ball is dead the signal is repeated **to the scorers**.

The umpires must wait until **the scorers acknowledge each separate signal** before permitting play to proceed.

* If on appeal, a batsman is Not-out the umpire shall call **NOT-OUT**.

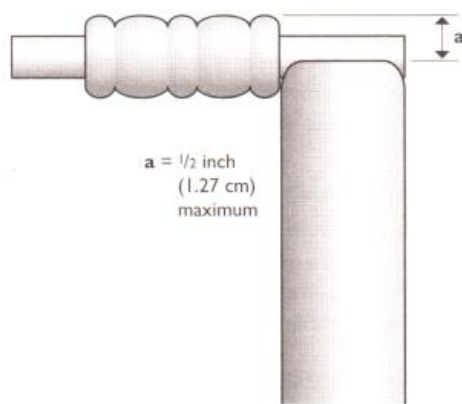
Cricket Pitch & Stump Dimensions

Laws 6 (The pitch) and 7 (The creases)

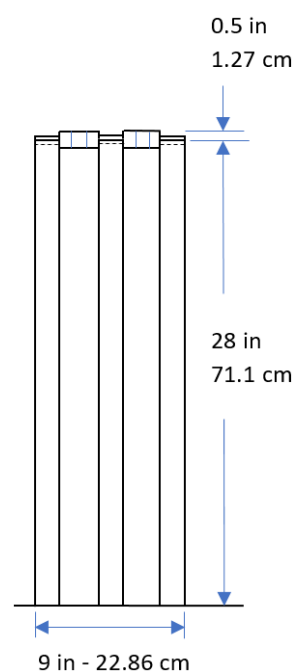


Rule [15.7](#) & [26.9](#) (No professional umpire / One day game)

To assist in adjudication of wides a white line must be painted in front of the popping crease, 75 centimetres either side of the outside stump. The ball is wide if it passes the crease on the outside of the line.



Law 8 The Wickets



CODE OF CONDUCT Rule 13

All persons in attendance, the players, officials, staff and spectators, must conduct themselves within the bounds of these rules and also as described in the **Preamble – The Spirit of Cricket** in the official **Laws of Cricket**. Transgressions hurt the game, and our association, and there is **no tolerance** for them.

Umpires have a duty to report any transgressions as per Rule 42. However, anyone can raise a report. The match atmosphere gets poisoned if it gets to this.

The **constitution** describes the procedures to deal with protests, charges and reports.

This may result in a reprimand and fines, forfeits, a or suspensions as per Rule 14.

The captain/club is responsible for the conduct of their players and spectators as per Rule 14.

13.1 The following code of behaviour is recommended by the Victorian Metropolitan Cricket Union (VMCU) and adopted by the RDCA. The Senior Committee may impose penalties for breaches of this code.

13.2 All matches will be conducted in the true spirit of the game of cricket and Club Officials, Coaches, Captains and Players are required to adopt this code or the Senior Committee may impose penalties.

13.3 No player or official will, during any match, whether on or off the field of play, engage in conduct unbecoming to the game of cricket.

Players will:

- i) Respect the umpire.
- ii) Not verbally or physically abuse any umpire.
- iii) Not dispute the umpire's decision nor react in a threatening or disapproving manner.
- iv) When given out, move immediately from the field.
- v) Endeavour to assist the umpire in carrying out the umpire's duties.
- vi) Not indulge in "sledging" of opposition players.
- vii) Not verbally or physically abuse any player or official.

13.4 Clubs will place all teams under the control of a responsible person. 13.5 Captains will:

- i) Instruct all players to avoid time-wasting. Incoming and outgoing batters are expected to pass on the field of play.
- ii) Instruct bowlers to return to the start of their run-up quickly and be ready to bowl without time-wasting.
- iii) Instruct all fielders to move quickly between overs and whenever required to change position, i.e. field setting, and changes be undertaken without time-wasting.
- iv) Ensure that players conduct themselves in a manner that conforms to the traditional image of the game of cricket.

13.6 Smoking on the playing field during the progress of a match is strictly prohibited. No alcohol will be consumed by players or match officials while the match they are participating in is in progress.

13.7 Players will maintain a standard of dress consistent with Rule 12.

13.8 Clubs will be responsible for the behaviour of their supporters and spectators. 13.9 Player being **reprimanded** - see Rule 14.6.

13.10 Persons registered with the Ringwood and District Cricket Association Incorporated (RDCA) who post on the RDCA website or on a club website or in social media will be subject to the rules of the RDCA and the Code of Conduct under the RDCA Social Media policy as posted on the RDCA website.

The term social media refers to any medium or method which is used by individuals or organisations to disseminate information or opinions to one or more other individuals or organizations. This includes noticeboards and toilets.

13.11 Threatening, offensive and obscene language will not be tolerated.



Reporting an Incident

It is most important for the umpire that special emphasis is placed on the procedure per Rule 14.4.i (Informing the player, captain or club).

The **Umpires Incident Report Form** and the player / official interview must be completed within 60 minutes of the completion of the match and the report form must contain:

- Correct and concise details in all pertinent areas of the report
- Indication of the charge being laid by ticking / crossing the pertinent box which also advises the pertinent "Set Penalty Offered".
- Advise reported player / official that he may accept the set penalty offered or refer the matter directly to the Tribunal.
- Advise reported player / official, of right to amend original plea should he / she subsequently decide to do so, but this must be completed in terms of RDCA Rule 14.4.v within 24 hours of the match completion.
- Basic information in the "Details of Report" section relating to the charge(s) only e.g. Basic circumstances which led to the report.
- No other extraneous information should be included on this form.
- Please be aware that, should the reported player / official not accept the set penalty offered, you will be required to attend a Tribunal Hearing likely to be held on the following Wednesday
- RDCAUA Secretary will advise details of the hearing and arrange for advocate support.
- Should a reported player / official not accept the offered mandatory penalty, the report will be referred to the **Disciplinary Committee** for action.
- Notice of the report (preferably with completed documentation but, at the very least, verbally or by email) must reach the RDCAUA Secretary no later than 12 noon on the day following completion of the match to enable formal submission requirements to be met.
- It is preferable that, if all report requirements can be met, the report is submitted on the day of the incident.
- Any report made against an umpire must be lodged with the Disciplinary Committee Chair (in writing) within 24 hours of the incident giving rise to the report as detailed in RDCA Constitution Rule 45. All reports will be referred to the RDCA Umpires Association for investigation and resolution.

Sample Incident Report Form



RDCA INCIDENT REPORT FORM

DATE: ____/____/20____

Match.....This Club.....v.....That Club.....

Grade.....A Premier.....

Round.....XX.....

PLAYER / OFFICIAL NAME	CLUB
T. Gunn	That Club
UMPIRES REPORT IN WRITING REQUIRED TO BE MADE PURSUANT TO RDCA RULES	
REPORTABLE OFFENCE:	DIRECT TO TRIBUNAL
Audible Obscenity (heard beyond boundary)	
Dissension / Disputing decision	X
Sledging or send off	
Wilful Disregard of Laws; RDCA Rules; Umpire(s) Instructions	
Alcohol Consumption (player)	
Alcohol consumption (match official)	
Equipment Abuse	X
Abusive Language or action – to any player	
Abusive Language or action - to Umpire	
Intentional Player contact	
Umpire Intimidation	
Other Reportable Incidents	
SET PENALTY OFFERED FOR PLAYER REPORT ONLY Tick ALL Applicable	
	Naming
	Naming
	Naming
	2 weeks
	4 weeks
	To Disciplinary Committee
	4 weeks
	4 weeks
	8 weeks
	12 weeks
	To Disciplinary Committee
	To Disciplinary Committee
Player / Official must attend the Independent Tribunal for charge to be heard	
Intentionally, recklessly or negligently making contact with an umpire	Charged
Threatening or attempting to make contact with or strike an umpire	Player
Striking an umpire	Witness (if apply)
	Yes
	No

Details of Report:

I was officiating at ____ bowler's end ____ when the incident occurred at approximately ____ 3.00 ____ pm.
____ T. Gunn ____ Player / Official ____ player ____ was reported for.....Dissension and equipment abuse in that he disputed an LBW decision and proceeded to smash his bat against the gate post when leaving the ground

Witness cited: RDCA Umpire M.Y. Partner; A. Skipper (This Club)

Umpires

Signature:.....Signed..... Name : (print).....I.M.A. Judge.....

Reported Player / Official
Signature:.....Signed..... Name : (print).....T. Gunn.....

Witness / Club Official
Signature:.....Signed..... Name : (print).....A.Boss... (That Club).....

Umpires Please Note: One report form per player to be used and relevant boxes are to be ticked

Pink Copy: To RDCA within 24 hours, Blue Copy: Umpires to retain,
Yellow Copy: Reported Player / Official Club, Green Copy - Witness Club

A supporting document, the **Incident Report Synopsis** as shown below, must be completed, and attached, providing details of the facts and circumstances that initiated the report.

Incident Report Synopsis

Player _____ of the _____ Cricket Club

is reported for:

1. Breaching the RDCA Code of Conduct as defined in Senior Rule 13.3, in particular
 - i. respect the umpire
 - ii. Not verbally abuse or physically any umpire
 - iii. Not dispute the umpire's decision nor react in a threatening or disapproving manner
 - iv. When given out, move immediately from the field
 - v. Generally assist the umpire in carrying out his duties
 - vi. Not indulge in sledging of opposition players
 - vii. Not verbally or physically abuse opposition players or officials
2. Breaching the Law relating to "Player's Conduct" in the Spirit of Cricket as per the Laws of Cricket and the RDCA rules and guidelines issued to all Clubs in relation to 'Players' and Captains' responsibilities.
3. Below is a detailed summary of the facts and circumstances in relation to the Incident Report lodged keeping in mind that those reading this were not present. State any of the above rules applicable.

Umpires' Name: _____ Signed: _____

Date: ____ / ____ / ____

Municipal Grounds

Grounds Codes and Locations

Shire of Yarra Ranges	
No.	Venue & Address
YR01	Alan Smith Oval, Pinks Reserve – Liverpool Road, Kilsyth
YR02	Roy Baldwin Oval, Pinks Reserve – Liverpool Road, Kilsyth
YR03	Lilydale Recreation Reserve #1 (Main) – Main Street, Lilydale
YR04	Lilydale Recreation Reserve #2 (Rear) – Main Street, Lilydale
YR05	Gateway Reserve – Nelson Road, Lilydale
YR06	Lilydale Heights College – Nelson Road, Lilydale
YR08	Kimberley Reserve #1 (South) – Kimberley Drive, Chirnside Park
YR09	Kimberley Reserve #2 (North) – Kimberley Drive, Chirnside Park
YR12	Montrose Recreation Reserve – Mt Dandenong Tourist Road, Montrose
YR13	Mooroolbark College – Manchester Road, corner Ross Pincott Drive, Mooroolbark
YR14	Keith Hume Fraser Reserve #1 (South) – Swansea Road, Montrose
YR15	Keith Hume Fraser Reserve #2 (North) – Swansea Road, Montrose
YR16	Mooroolbark Heights Reserve – Longfellow Avenue, Mooroolbark
YR17	Kiloran Park #1 (South) – Hawthory Road, Mooroolbark
YR19	Elizabeth Bridge Reserve – Durham Rd, Kilsyth
YR20	Red Earth Community Park – cnr Brice Avenue & Hull Road, Mooroolbark
YR22	Balcombe Ave Reserve – Balcombe Avenue, Mooroolbark
YR23	Morrison Reserve, (Back of school) – via Burdap Drive, Mt. Evelyn
YR24	Kinley Estate Oval – Cave Hill Rd (rear of Lilydale High School)
YR25	Mt. Evelyn Res #1 (Main) – Tramway Road, Mt. Evelyn
YR26	Mt. Evelyn Res #2 (Lower) – Tramway Road, Mt. Evelyn
YR27	Silvan Recreation Reserve – Monbulk Road, Silvan
YR28	Seville Recreation Res. #1 (North) – Monbulk-Seville Rd., Seville
YR29	Seville Recreation Res. #2 (South) – Monbulk-Seville Rd., Seville
YR30	Coldstream Recreation Reserve (Halley Supple Oval) – South Gateway, Coldstream
YR31	Margaret Lewis Reserve – Ingram Road, Coldstream
YR34	Gruyere Recreation Reserve – Killara Rd cnr Cahillton Road, Gruyere
YR35	Queens Park – Don Road, Healesville
YR36	Don Road Sporting Complex #2 (North) – via Don Road, Healesville
YR37	Hoddles Creek Community Reserve – Gembrook-Launching Place Road, Hoddles Creek
YR38	Launching Place Reserve – Wickhams Road, Launching Place
YR39	Millgrove Recreation Reserve – Cavanagh Road, Millgrove
YR40	Woori Yallock Reserve – Healesville-Koo Wee Rup Road, Woori Yallock
YR41	Yarra Glen Rec. Res. #1 (Main) – via Melba Highway, Yarra Glen
YR42	Yarra Junction Reserve – Park Road, Yarra Junction
YR43	Wesburn Park #1 (West) – Warburton Highway, Wesburn
YR44	Wesburn Park #2 (East) – Warburton Highway, Wesburn
YR45	Wandin North Reserve – Clegg Road, Wandin North
YR46	Wandin East Recreation Reserve – Monbulk-Seville Road, Wandin East
YR47	Warburton Cricket Ground – Warburton Highway, Warburton
YR48	Powelltown Reserve – Yarra Junction-Noojee Road, Powelltown
YR49	Sheep Station Creek Recreation Reserve – Healesville-KooWeeRup Road, Yellingbo

City of Maroondah

No.	Venue & Address
MR01	Ainslie Park – Brentnall Road, Croydon
MR03	Gracedale Park – Gracedale Avenue, Ringwood East
MR04	Hughes Park (Brushy Creek Park) – Maroondah Highway, North Croydon
MR05	Barangeong Reserve #1 (West) – Bambra Street, Croydon
MR06	Barangeong Reserve #2 (East) – Bambra Street, Croydon
MR07	Barangeong Reserve #3 (Baseball area) – Bambra Street, Croydon
MR08	Griff Hunt Reserve – Lyons Road, Croydon North
MR09	Lipscombe Park – Kirtan Drive, Croydon
MR10	(ex) Melba College – Samuel Street, Croydon
MR11	Cheong Park – Eastfield Road, Croydon South
MR12	Benson Oval (Eastfield Park) – Eastfield Road, Croydon South
MR13	Dorset Recreation Reserve #1 (East) – Dorset Road, Croydon South
MR14	Dorset Recreation Reserve #2 (West) – Dorset Road, Croydon South
MR15	Croydon Hills Primary School – Campaspe Drive, Croydon Hills
MR17	East Ringwood #1 (Main) – Mt Dandenong Road, Ringwood East
MR18	East Ringwood #2 (Lower) – Mt Dandenong Road, Ringwood East
MR19	Ringwood Secondary College – Bedford Road, Ringwood
MR21	Heathmont Reserve – Waterloo Street, Heathmont
MR23	North Ringwood Reserve – Wonga Road, Ringwood
MR26	Quambee Reserve #1 (Main) – Wonga Road, Ringwood North
MR27	Quambee Reserve #2 (North) – Wonga Road, Ringwood North
MR31	J.W. Manson Reserve #1 (East) – Selkirk Avenue, Wantirna
MR32	J.W. Manson Reserve #2 (Main) – Selkirk Avenue, Wantirna
MR33	J.W. Manson Reserve #3 (West) – Selkirk Avenue, Wantirna
MR36	Mullum Reserve #1 (Main) – Mullum Mullum Road, Ringwood
MR37	Mullum Reserve #2 (Lower) – Mullum Mullum Road, Ringwood
MR40	Silcock Reserve (North) – William Road, Croydon
MR41	Silcock Reserve (South) – William Road, Croydon
MR51	Arrabri Reserve – Allambanan Drive, Bayswater North
MR52	Croydon Primary School – Kent Avenue, Croydon
MR54	Glen Park Reserve – Glen Park Road, Bayswater
MR58	Greenwood Park – Greenwood Avenue, Ringwood

Shire of Murrindindi

No.	Venue & Address
MD01	Marysville Oval (Gallipoli Park) – Falls Road, Marysville

City of Knox

No.	Venue & Address
Kx01	Guy Turner Reserve – Amber Street (off Bona Vista Rd), Bayswater
Kx02	Sasses Avenue Reserve – Terama Crescent, Bayswater
Kx03	Chandler Park – Chandler Road, Boronia
Kx06	Lewis Park #1 (North) – Lewis Road, Wantirna South
Kx07	Lewis Park #2 (South) – Lewis Road, Wantirna South
Kx08	Lewis Park #3 (West) – Lewis Road, Wantirna South
Kx09	Wantirna Reserve – Mountain Highway, Vermont South
Kx10	Schultz Reserve – Kinloch Parade, Wantirna
Kx11	Walker Reserve – Tyner Road, Wantirna South
Kx14	Templeton Reserve – Templeton Street, Wantirna
Kx15	Milpera Reserve – Milpera Crescent, Wantirna
Kx16	Wantirna College – Harold Street, Wantirna
Kx18	Llewellyn Reserve #2 (West) – via Llewellyn Park Drive, Wantirna South
Kx22	Scoresby Recreation Reserve (Exner Reserve) – Stud Road, Scoresby
Kx27	Colchester Park (Reserve), Colchester Road, Boronia
Kx28	Scoresby Secondary College – Zervas Street, Scoresby
Kx29	Dobson Park Reserve #1 – Francis Crescent, Ferntree Gully

City of Manningham

No.	Venue & Address
MH01	Colman Park – Colman Road, Warrandyte South
MH02	Warrandyte Reserve #1 (Main) – Tarroona Avenue, Warrandyte
MH03	Warrandyte Reserve #2 (North) – Tarroona Avenue, Warrandyte
MH04	Stintons Reserve – Commercial Road, Park Orchards
MH05	Wonga Park Reserve #1 (Main) – Launders Avenue, Wonga Park
MH06	Wonga Park Reserve #2 (Upper) – Launders Avenue, Wonga Park
MH08	Warrandyte High School – Alexander Rd, Warrandyte
MH09	Donvale Primary School – Elata Street, Donvale
MH10	Templestowe College – Cypress Avenue, Templestowe
MH11	Burgundy Drive Reserve – Burgundy Drive, Doncaster
MH12	Serpells Community Reserve (East) – Burleigh Drive, Templestowe
MH13	Donvale Reserve #4 (East) – via Mitcham Road, Donvale
MH14	Bulleen Park West Oval – via Bulleen Road, Bulleen
MH15	Serpells Community Reserve (West) – Burleigh Drive, Templestowe



RDCA Umpires' Association

History of the RDCA Umpires Association

The RDCA Umpires' Association began in 1955 under the founding Presidency of Reg. Johnston who saw the need to create a group of independent adjudicators for the higher grade matches of the Association and interest in playing cricket was growing at a rapid rate.

Being an umpire was, and is, seen as a natural progression for players wanting to retain their involvement in the game while placing less stress on their aging bodies.

Over the years many of the umpires' panel members have demonstrated their love of and commitment to the game by significantly contributing to the RDCA in administrative and management areas.

For service to the RDCA, members have seen fit to award Life Membership to the following past and present members of the RDCA Umpires' Association and we acknowledge them for their selfless contributions to the current standing of your Association:

Bob Bissett (dec)	Alan Bonnett (dec)	Josh Brown (dec)
Ken Dunham (dec)*	Tony Gawne*	Ron Ellis (dec)*
Reg. Johnston (dec)	Harold Matthews (dec)	Pat Meehan*
Stuart Newey*	Steve Pascoe, OAM*	Charlie Puddyphatt (dec)
Alan Reidy (dec)	Don Smith* (dec)	John Springett (dec)*

*The Umpires' Association has also bestowed separate Life Membership recognition to these past and present members, and to Paul Denton, John Fearnley and Martein Pruyzers, specifically for their services to RDCA umpiring.

The dedication of our panel members is appreciated by all who seek independent management of match situations and we continually strive to improve our knowledge of the Laws and local Rules as well as match management skills to contribute to cricket matches free from any undesirable aspects. Rarely are we unsuccessful.

If you are reading this section of the manual then it is likely that you are a registered Umpire in the RDCA competition.

On behalf of the Board of Management, and its respective competition committees, please accept our thanks to you for participating in this role.

If you are not a registered umpire then please consider becoming an umpire.

Ask a professional umpire to provide more information or contact a member of the committee whose name appears in the front and become a participant in your sporting community.

Umpire Accreditation

The Ringwood & District Cricket Association Umpires' Association fully endorses panel members involvement in the National Umpiring Accreditation Scheme which is conducted under the auspices of the Australian Cricket Board, and is responsible for the development, implementation and monitoring of umpire accreditation.

Members are required to have Community Officiating (Level 1) accreditation as a minimum requirement to umpire in the RDCA.

The Representative Officiating (Level 2) is available to members who wish to enhance their training qualification. It aims to provide umpires officiating at all levels below first class with an appropriate level of competency and your Association strongly recommends completion of the course to all panel members.

Upon successful completion of this course, you will be recognized through the awarding of a certificate and ID card, and your name will be registered on the ACB and Australian Sports Commission data bases of accredited umpires.

Enquiries should be addressed to the RDCA Umpires' Adviser, Graeme Lloyd on 0439 634 310 or at lloyd@bigpond.net.au

Umpire Accreditation Renewal

New cards are issued during January and July annually. Accordingly, the reaccreditation process, including sign-off, needs to be completed by 30 June or 31 December.

Please take the following steps to renew your accreditation:

Go to the Community Cricket website: <https://www.community.cricket.com.au/umpire/accreditation-and-pathway>

Log on to the site using your email address and password (if you have not logged on to the site previously, you will need to register – follow the process on the aforementioned website).

Navigate the courses

Complete the Online "Representative Officiating (Already accredited umpire)". This is a free course.

Contact the RDCA Umpires' Advisor (Dale Ireland: 0415 185 562 daleireland@gmail.com) to request an Umpire Reaccreditation Form.

Complete the Re-accreditation Form and return to Dale.

Your application will be assessed on the basis of your completion of the Online Course and recent past umpiring experience and performance.

All members must have completed the on-line Cricket Victoria Community Officiating Accreditation Program (Level 1) to be eligible to umpire in the RDCA. The fee will be refunded by the RDCA upon the successful completion of the course.

The link is [Umpire Accreditation](#)

Community Officiating

Cricket Australia's Community Officiating Program replaces the old Level One Umpire Accreditation course. It is an entry level course designed for:

- Those interested in becoming cricket umpires on a regular paid basis for the first time.
- Parents who, from time to time. Are required to officiate in junior competitions.
- Teachers who supervise and officiate in school competitions; and
- Anyone wishing to expand their knowledge of the game.

The accreditation program is conducted in two parts:

- Part One – a knowledge based section completed on-line; and
- Part Two – a practical section covering on-field technique and application of the knowledge gained in Part One followed by on-field assessment in a match environment.

The cost of the program is expected to be \$40 which will include access to the on-line section of the course as well as additional resources required to complete the course.

Umpires must have the [Working with Children](#) certificate.

There is no cost for the volunteer applicants but you will need to have a current passport photo available when the application is lodged at an Australia Post outlet.

RDCAUA Membership for the Season is \$60 payable within 1 month of 1st appointment.

Umpires' Beliefs, Responsibilities and Ethical Standards

The Australian Sports' Commission describes the duty of sports' officials is to act as impartial judges of sport competitions. When acting as an official, the duty carries with it an obligation to perform with accuracy, fairness and objectivity through an overriding sense of integrity.

Although the vast majority of cricket umpires work as an amateur official, it is vital every official approach each assignment in a professional manner. Because of their authority and autonomy, officials must have a high degree of commitment and expertise. Cricket Victoria (CV) believes these facts impose on its umpires, the higher ethical standard by which true professionals are judged.

By choosing to umpire in the Ringwood & District Cricket Association (RDCA) competition you have therefore inherently accepted the responsibilities that go with that commitment.

The RDCA is committed to improving all aspects of cricket in the district at all levels. Playing, coaching and officiating are all part of the one brand and the RDCA aspires to be the best in all of these areas.

Quality officiating plays a vital role in player development and in the public image of the sport. It is important that all umpires who choose to umpire with CV, be part of this commitment and aspire to do their best to enhance a positive image of Premier cricket.

Every time an umpire wears the uniform it says '*I am a representative of the Ringwood & District Cricket Association*', and we must be seen to maintain the highest standards in everything we are seen to do.

Philosophy

As umpires we are an integral part of the cricket community, working with other stakeholders to provide a positive cricket experience for all participants.

We believe:

- That every official in all RDCA competitions should demonstrate the highest standards of ethics and sportsmanship and promote the development of good character and other valued life skills.
- That every official has the opportunity to perform at the highest level at which they are capable.
- That, to achieve this, all umpires will demonstrate a commitment to their personal development.
- That all officials are committed to the six core principles of:
 - Trustworthiness – involves integrity and honesty
 - Respect – displaying sportsmanship to all participants
 - Responsibility – being accountable and prepared
 - Fairness – making sure that everyone is treated equally
 - Caring – showing compassion for every person's role
 - Sportsmanship – playing by the rules.



Rights

As an official operating on behalf of the RDCA you have the right to expect that:

- Your health and safety are paramount
- You will be treated with respect and openness
- You will be appointed to a level of competition appropriate to your level of competence
- You will have access to training and self-improvement opportunities.

Theme

Individual umpires who wear the RDCAUA uniform, will demonstrate that they are part of the collective umpiring body by:

- Following the RDCA Umpires' **Code of Ethics**, being professional in all of their actions, having the utmost integrity and possessing an individual quest for excellence in preparation and performance.
- Being a positive part of the umpiring community, sharing and growing together for the betterment of umpiring and cricket
- Being part of the education process by which everyone can gain through the sharing of experiences, enforcing rules in a consistent manner and working to enhance the sporting experience for all.

RDCAUA Mission

- To provide trained and accredited umpires for all matches in each competition conducted by the RDCA.
- To provide the highest quality standard of umpiring possible, for each level of the RDCA, by individuals who are appropriately trained and prepared.
- To be recognised as the district that produces the best umpires for the RDCA umpiring environment.

In striving to achieve this, it is expected that all umpires will have in place an individual plan by which they can demonstrate their commitment to their personal and professional development.

To achieve this and to support individuals to achieve their goals, the RDCA will:

- Establish recruitment strategies to encourage interested men and women to become umpires, to increase the body of officials available each week.
- Provide training programs that develop the individual's understanding of the Laws of Cricket, Playing Conditions for all competitions and specific technical training in best practice field craft.
- Encourage observation of the 'Spirit of Cricket', sportsmanship, fair play and ethical standards on all occasions.
- Recognise achievement and development by the promotion of individuals along a merit based pathway.

Heat Guidelines for Cricket Umpires

We all are aware that the umpires and the team management has the duty of care to for the health and safety of the players. We are so actively occupied looking after others' but who looks after the Umpires? Unfortunately, we are the destiny of our heat exhaustion on the field of play.

If you are 2% dehydrated, it can cause detrimental effects. It can decrease your performance by 20%, both physically and mentally. This could mean the below-mentioned:

- Reduced concentration – miscounting balls and overs.
- Slower reaction times - Movement becomes lethargic & sluggish as well as getting into position.
- Impaired judgement and decision making – Missing no-balls, LBWs will be affected, caught decision could be clouded.

These are a few guidelines that Umpires could take into consideration to alleviate the effect of heat exhaustion.

Before the Match

- Have a good night's sleep.
- Avoid any alcohol the night before the match, especially if you know what the weather forecast is. Alcohol causes dehydration.
- Ensure that you have a good breakfast on the day of the match.
- Ensure that you are well hydrated before the match. You should drink at least a litre of water before 2-3 hours of exercise on average.
- When you consult with the Captains before the match, ensure that the Umpires are taken into consideration when water is carried out to players.

During the Match

Refer to the RDCA Heat Policy.

- Remember to include yourselves as umpires in the frequent drinks breaks during the pre-match discussion with the Captains.
- If, at any time during the match, umpires feel that their condition will compromise their decision making, they should take the necessary precautions by rehydrating themselves. Remember, if you feel that way, then the players are probably feeling the same.
- When there are two umpires and one of the umpire's condition is affected, take a drinks break and stand at square leg if you're up to it. Or go off the ground for a few overs. Wet your neck, rehydrate properly, sit in the shade and recommence when your condition allows you to.
- When there is one umpire and his/her condition is affected, ensure that you are rehydrated as often as the players are.

- If you are standing alone and your condition gets worse, speak to the Captains and go off the ground for a while, wet your neck, rehydrate properly and sit in the shade, while the players assist in umpiring. When your condition allows, recommence.

Remember HEAT:

Hydrate (Covid safely)

Ensure that you're well nourished

Avail of extra drinks breaks

Talk to Captains to monitor YOU

Please support our sponsors



www.rdca.com

Ringwood & District Cricket Umpires' Code of Ethics

CV is entrusted with the development of cricketers from when they enter the sport to the National and International level, for those who achieve the highest level of recognition. This process requires that umpires at all levels to be independent, impartial and responsible to the people they serve. The official is appointed to carry out the roles and responsibilities as identified by the governing body (RDCA Executive Committee, CV or Cricket Australia).

The umpire should at all times follow the directions of the governing body, especially in the area of maintaining standards.

Violation, by an umpire, of the Code of Ethics may result in sanctions by the Executive Committee.

An umpire shall:

- Place the welfare of the individual player above all other consideration.
- Maintain confidence and control at all times when in the role of the umpire.
- Devote time, thought and study to improving his understanding of the Laws, Playing Conditions and craft, to provide an effective and creditable performance in a fair and unbiased manner.
- Work with fellow umpires and the RDCA in a spirit of harmony and co-operation for the betterment of cricket.
- Resist every temptation and outside pressure to use one's position to benefit oneself.
- Under all circumstance avoid promoting the special interest of any person or group other than the sport we serve.
- Always act in a dignified manner in all personal conduct with players, coaches, club officials, CV officials and the public, whilst acting as the official.
- Be prepared both physically and mentally, dress according to expectations and maintain a proper appearance befitting the importance of the event.
- Honour RDCA appointments, regardless of any possible inconvenience or financial loss.
- Not make public comment or statement to news media that is critical of any stakeholder in the sport.
- Not smoke in the vicinity of the playing area.
- Not present in public in an intoxicated state.
- Carry a responsibility to act in a manner becoming of a professional person. The conduct of the umpire influences the public attitude towards the sport and the umpire.

Expectations

Individual umpires must take responsibility for all of their actions and be ultimately responsible for their own progression. Whilst others may decide on your progress, it is the individual who has control over their improvement.

Set yourself up for success.

The umpire who waits for success to come their way will be passed by others who *lead change*.

As the official - *What makes you stand out?*

When an appointment for higher duties was made, ask yourself - Why was that person chosen ahead of me?

Your credibility as an official is determined by your understanding of the game and your technical ability to manage the match. The successful official demonstrates best practice, communication skills and develops a professional, working relationship with all stakeholders.

Code of Conduct for Umpires

All Ringwood & District Cricket Association umpires:

1. Shall accept responsibility for all actions taken.
2. Bear a responsibility for promoting a positive public image of RDCA and the sport.
3. Shall prepare themselves both physically and mentally; shall dress neatly and appropriately before, during and after an event and shall conduct themselves in a manner consistent with the high standards of the profession.
4. Will respect the basic tenets of history, integrity, neutrality, respect, sensitivity, professionalism, discretion and tactfulness.
5. Shall be impartial and fair in all deliberations.
6. Shall uphold the traditions, etiquette and dignity of cricket.
7. Shall master the Laws of Cricket and the mechanics to enforce the Laws in an impartial, firm and controlled manner.
8. Shall display and execute superior, communication skills, both verbal and non-verbal.
9. Must avoid conflicts of interest both real and perceived.
10. Shall encourage inclusivity and access for all.
11. Refrain from any form of personal abuse towards players.
12. Shall be punctual and professional in the fulfilment of their duties.
13. Shall work with each other and the governing body in a constructive and co-operative manner.
14. Must not make false or misleading statements in regard to any matter arising from their officiating

Umpires' Team Rules

- ❖ *One in All in – ABSOLUTELY no exceptions*
- ❖ *We don't mess up great decisions with poor explanations*
- ❖ *If we are asked a respectful question, we give a respectful answer*
- ❖ *The behaviour we ignore is the behaviour we encourage*
- ❖ *Good umpires know what to do; great umpires have the courage to do it!*

Explanations:

- *WE ARE A TEAM!*
- *ALWAYS support your colleague; discuss and resolve any matters of contention, on or off the field, in private.*
- *OWN the decision and progress as a team. No bad-mouthing panel members*
- *WE HELP AND SUPPORT EACH OTHER!*
- *Giving too much information often only muddies the waters. Keep it simple; don't try to justify close decisions. IT'S YOUR OPINION THAT COUNTS.*
- *Be civil at all times. Don't exacerbate what could become volatile situations with your words or actions.*
- *Don't pass a problem on to the next match's umpires. If you note actions outside the Spirit of Cricket / Code of Conduct, TAKE ACTION. Involve team captains and emphasise their responsibility to control their team member's behaviour / actions.*
- *You know what's required. Be assertive; Control the match; Hold Captains responsible; Escalate issues (Incident Report) if warranted.*

Match Manual Index

Afternoon Tea			
15 Minute Rule.....	25		
9 wickets down	25		
Non-Provision	25		
Attire	25		
Batter			
Modified Grades			
Retired in Summery Table 21.3	32		
Behaviour			
Reporting Incident.....	46		
Bowler			
Modified Grades			
Minimum of bowlers 21.3	32		
Summary Table 21.5.....	32		
Bowling			
Suspect Action Policy	35		
Underage restrictions.....	34		
Captain			
Code of Conduct 13.5.....	44		
Competition Divisions.....	1		
Concussion & Head Trauma			
Assessment	17		
Concussion & Head Trauma.....	15		
Constitution RDCA	1		
Contacts			
Clubs.....	5		
Committees	4		
RDCA – Match Day	1		
Dangerous/Unfair Bowling	36		
Entry of Scores – Mycricket	1		
Fees			
Affiliation	8		
Fielding Restrictions			
T20 & T40 matches	28		
Fitness of Conditions.....	21		
Follow On	34		
General Information	8		
Grade Drop Table	24		
Ground			
10 Metre Circle	25		
Assessment	22		
Preparation Responsibilities	22		
Safety	22		
Grounds (Municipal)			
Knox.....	51		
Manningham	51		
Maroondah.....	50		
Murrindindi	50		
Yarra Ranges.....	49		
Health & Safety			
Concussion & HT	15		
Heat Advice	11		
Heat Rule	10		
Lightning Safety	14		
Hours, Overs and Restrictions	34		
Incident Report Form.....	47		
Incident Synopsis	48		
Investigation			
Misbehaviour 14.1	46		
Limited-Over matches			
Table of entitlements	34		
Match			
20/20 (T20) Rules	33		
Changes to Rules.....	7		
Conditions Assessment.....	22		
Grading & Venues.....	6		
Minimum Overs	25		
Modified Rules Table	32		
Rules	1		
Start Times	23		
Match Day Checklist.....	19		
Match Day Contacts.....	1		
MyCricket			
Short scores	1		
No Ball			
Modified Grades 21.3	32		
No Official Umpire	25		
Off Pitch	25		
Official Umpire.....	25		
Player			
Finals qualification 10.2.....	24		
Players			
Absent	25		
Attire.....	25		
Clearances / Permits.....	23		
Grade Drop Table	24		
Registration	23		
Reports of Misbehaviour	46		
Substitute	24		
policies			
Member Protection.....	9		
Policies			
Extreme Heat	9		
Other	9		
Player Safety-Under age.....	9		
Players Safety - Helmets.....	9		
Suspect Bowling Action.....	35		
RDCA			
Competition Divisions.....	1		
RDCA Office	1		
RDCA Pres. Dinner.....	2		
Report			
Against umpire 14.1.....	46		
Reports			
Captains on Umpires	26		
Match	8		
Misbehaviour	46		
Respect	20		
Rules			
Changes for 2021/22	7		
Senior Rules	1		
Social Media policy 13.10	45		
Spirit of Cricket.....	20		
Suspect Bowling Action			
Policy	35		
T20			
20/20 Interruptions.....	33		
20/20 Rules	33		
Two-day matches			
Table of entitlements	34		
Umpire(s)			
Accreditation.....	53		
Assessing conditions	22		
Beliefs & Standards	54		
Code of Conduct.....	60		
Code of Ethics	59		
Community Officiating Level 1	54		
Expectations	60		
Heat Guidelines	57		
Incident Report Form	47		
Incident Synopsis	48		
Mission	56		
Philosophy	55		
Player to Respect Umpire 13.3	44		
RDCAUA History	52		
Rights / Theme	56		
Team Rules	61		
Umpire(s) Duties			
After Match Duties	39		
Before Match	37		
Bowlers End Umpire	37		
Strikers End Umpire	38		
Umpiring in RDCA			
Duties / Responsibilities	37		
Five Penalty Runs	41		
LBW Law	40		
Pitch / Stump Dimensions	43		
Signals	42		
Wide Guidelines	25		

Thank You to all our SPONSORS

Please support our sponsors



www.rdca.com